



Global Industries

Cherokee

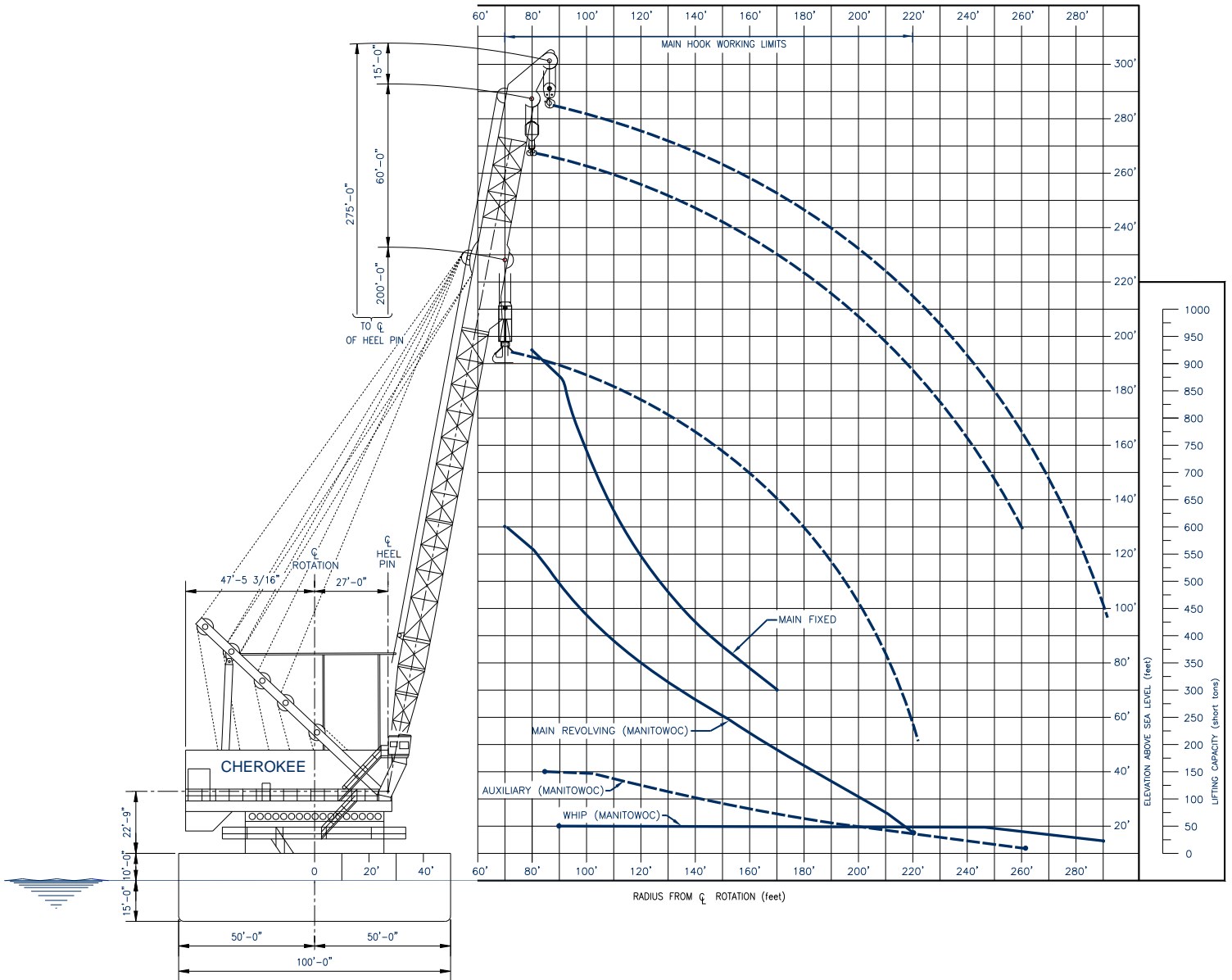
globalind.com

Cherokee Pipelay/Derrick Barge





VESSEL DATA SHEET



HOOK RADIUS vs. LIFTING CAPACITY & HOOK HEIGHT

Pipelay Derrick Barge



GENERAL

Length (overall)	387 ft (117.96 m)
Width	100 ft (30.48 m)
Depth	25 ft (7.62 m)
Classification	USCG, ABS A-1
Year Built	1969
Registry (Flag)	USA
Operating Draft (min/max)	12 ft (3.66 m) / 17 ft (5.19 m)
Tonnage (gross / net)	7655 / 2296
Max Deck Load	Project Specific
Free Deck Area (length x width)	100 ft (30.48 m) x 60 ft (18.3 m)
Moon Pool (yes / no)	no
Accommodations	174 people
Hospital Beds	6
Transit Speed (econ / max)	Towed
Helicopter Max Rating	6,200 lbs
Helicopter Refueling capacity	N/A
Helideck Dimensions	40 ft (18.16 m) x 40 ft (18.6 m)

MACHINERY

Main Engines	N/A
No. of Generators	4
Main Power	(3) 500 kW
Auxiliary Power	(1) 100 kW emergency
No. of Compressors	(3) 125 psi
Total Output	1,759 cfm (2,988.54 m ³ /h)
Water Makers	Sea Recovery
Total Capacity	780 USG/h (2,952.3 L/h)

BUNKER CAPACITY

Fuel	350,000 USG (1,324,750 L)
Fresh Water	1,000,000 USG (3,785,000 L)
Potable Water	138,000 USG (522,330 L)

DYNAMIC POSITIONING

.....N/A

COMMUNICATION SYSTEMS

- (1) 125 watt SS Band
- (1) Inmarsat 'B' Cellular Phone
- (4) Modular VHF

NAVIGATION

.....N/A

MOORING EQUIPMENT

No. of Anchors; Weight	(8); 30,000 lb (13,608 kg)
Make, type	Navy, Stockless
No. of Winches	(4) Double Drum
Make, type	Manitowoc 560
Wire (length/diameter)	5,000 ft (1,524 m) / 1.75 in

MAIN CRANE

Derrick	
Make, Model	Manitowoc Seacrane 600
Type	Revolving
Boom Length	
Main	200 ft (60.96 m)
Auxiliary	260 ft (79.25 m)
Whip	275 ft (83.82 m)
Capacity	
Main Revolving	600 s. tons @ 70 ft (544 MT @ 21.34 m)
Main Fixed	925 s. tons @ 80 ft (839 MT @ 24.38 m)
Auxiliary	150 s. tons @ 100 ft (136 MT @ 30.48 m)
Whip	50 s. tons @ 250 ft (45.36 MT @ 76.2 m)

AUXILIARY CRANE(s)

Make, Model	Manitowoc 3900 W
Type	Crawler
Boom Length	120 ft (36.59 m)
Capacity	86 s. tons (78 MT)

MISSION EQUIPMENT

Pipelay Method(s)	Conventional S-Lay
No. of Work Stations (@ 40 ft)	7
Pipe Diameter (min/max)	2 in / 48 in
Tensioners (make, type)	(2) Western Gear
Total Capacity (ea/ttl)	160 kips (72,576 kg) / 320 kips (145,152 kg)
Reel Capacity (tonnage)	N/A
Abandon/Rec. Winch	
Type (make/model)	Rental
AR Wire (length/diameter)	4,000 ft (1,219 m) / 2.5 in
Capacity	300,000 lb (12,000 kg)
Davits	N/A

STINGER

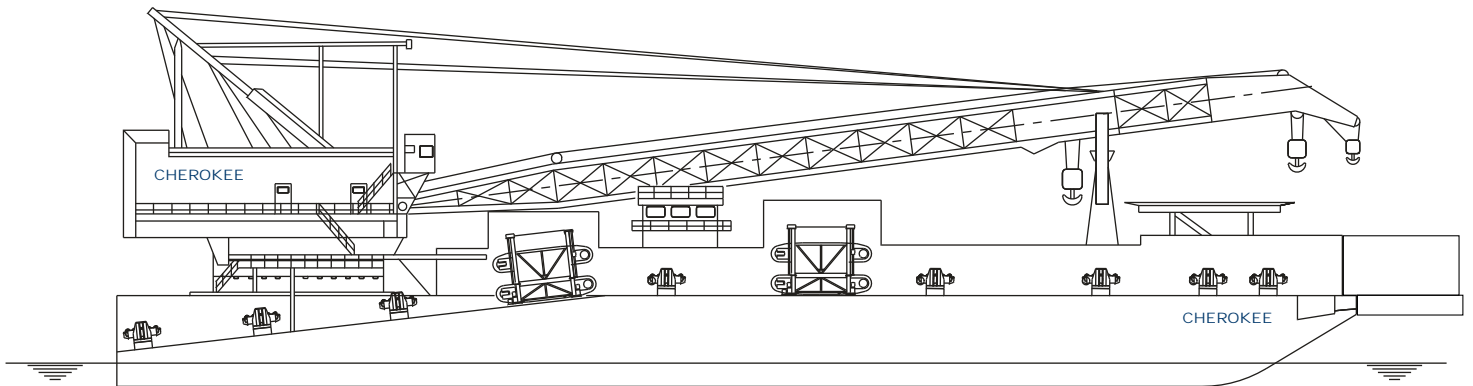
Type	Truss (Ballast) Stinger 16; 2 section Articulated (Ballast) Stinger 14
Length (min/max)	160 ft truss; 120 ft articulated

PIPE BURY EQUIPMENT

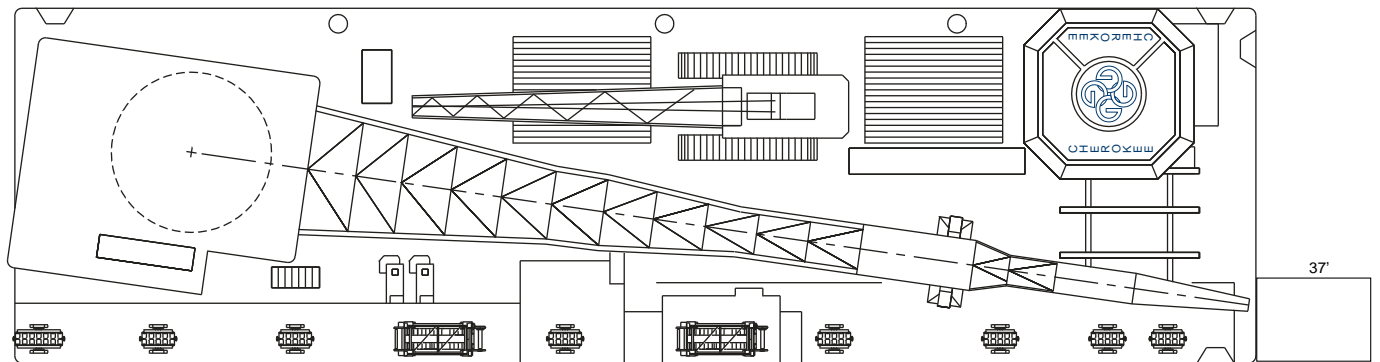
.....N/A

DIVING SYSTEM

.....650 SAT System with HRC



Profile



Plan



globalind.com

Operations

8000 Global Drive
Carlyss, LA 70665 USA
Tel +1.337.583.5000
Fax +1.337.583.5100

Business Development

11490 Westheimer, Suite 400
Houston, TX 77077 USA
Tel +1.281.529.7979
Fax +1.281.529.7980