



Global Industries

Cheyenne

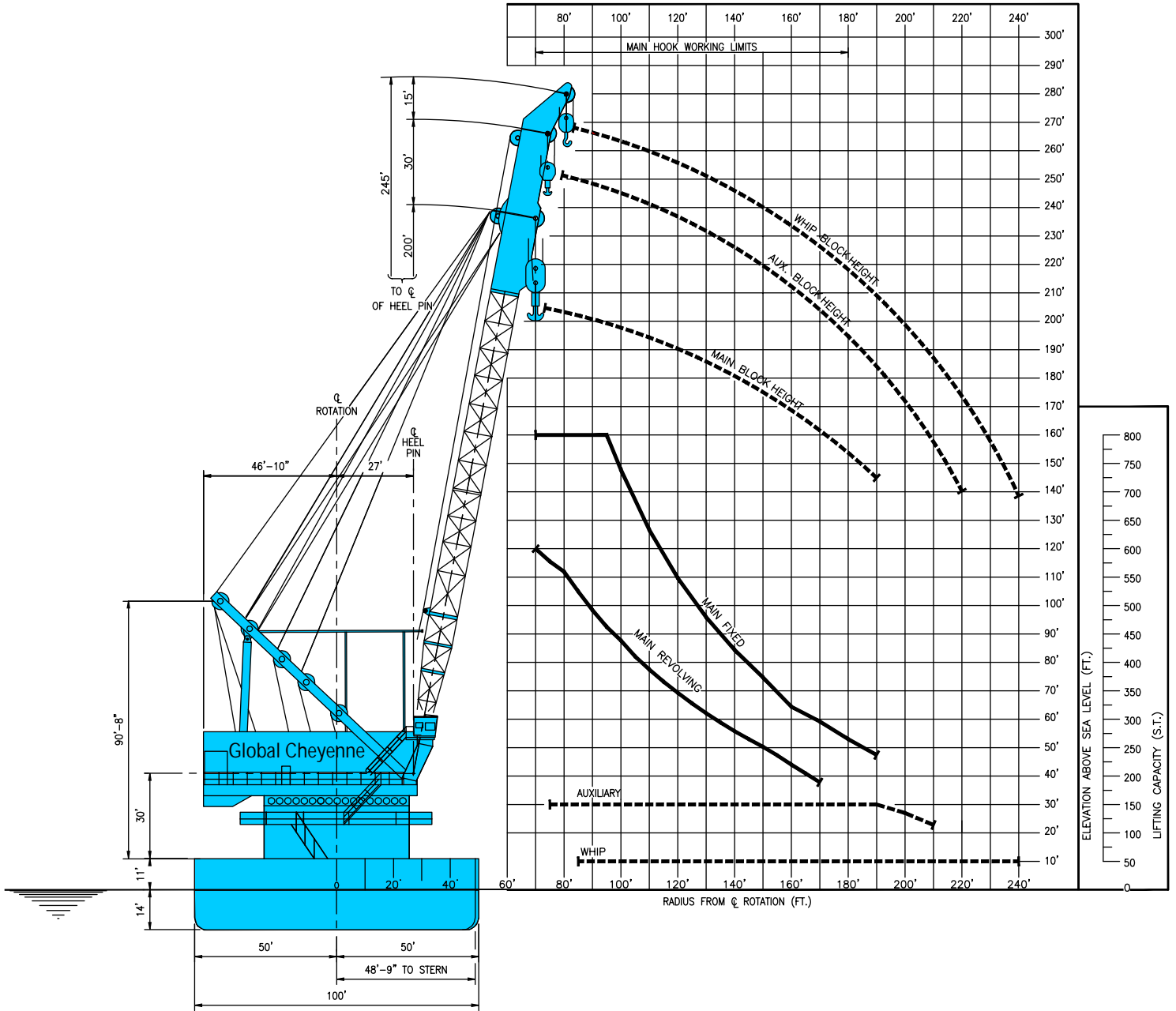
globalind.com



Cheyenne Pipelay/Derrick Barge



VESSEL DATA SHEET



HOOK RADIUS vs. LIFTING CAPACITY & HOOK HEIGHT

Pipelay Derrick Barge



GENERAL

Length (overall)	350 ft (106.68m)
Width	100 ft (30.48 m)
Depth	25 ft (7.62m)
Classification	ABS A-1
Year Built	1969
Registry (Flag)	Vanuatu
Operating Draft (min/max)	12 ft (3.68 m) / 16.5 ft (5.03 m)
Tonnage (gross / net)	5387 / 5387
Max Deck Load	Project Specific
Free Deck Area (length x width)	Project Specific
Moon Pool (yes / no)	no
Accommodations	220 people
Hospital Beds	2
Transit Speed (econ / max)	Towed
Helicopter Max Rating	7,500 lbs (3,402 kg)
Helicopter Refueling Capacity	N/A
Helideck Dimensions	50 ft (15.24 m) x 40 ft (12.19 m)

MACHINERY

Main Engines	N/A
No. of Generators	5
Main Power	(2) 820 kW; (1) 600 kW
Auxiliary Power	(1) 225 kW emergency; (1) 75 kW portable
No. of Compressors	(3) Sullair Diesel 125 psi
Total Output	2,525 cfm (4,289.98 m ³ /h)
Water Makers	(2) Sea Recovery Reverse Osmosis
Total Capacity	750 USG/h (2,838.75 L/h)

BUNKER CAPACITY

Fuel	320,000 USG (1,211,200 L)
Fresh Water	680,000 USG (2,573,800 L)
Potable Water	same tank as fresh water

DYNAMIC POSITIONING

.....N/A

COMMUNICATION SYSTEMS

- (1) 150 Watt SSB
- (2) Motorola VHF 25 Watt
- (1) Anristu Inmarsat 'B'
- (1) MTN V-Sat w/5 phone lines & internet café

NAVIGATION

- (1) Robertson Electric Gyro Compass
- (1) Furuno Radar
- (1) Automated Identification System (AIS)

MOORING EQUIPMENT

No. of Anchors; Weight	(8); 25,000 lb (11,340 kg)
Make, type	Stockless
No. of Winches	(4) Double Drum
Make, type	Skagit RB100
Wire (length/diameter)	3,500 ft (1,066 m) / 1.75 in

MAIN CRANE

Derrick	
Make, Model	Manitowoc Seacrane 600
Type	Revolving
Boom Length	
Main	200 ft (60.96 m)
Auxiliary	230 ft (70.00 m)
Whip	245 ft (74.68 m)
Capacity	
Main Revolving	600 s. tons @ 70 ft (544 MT @ 21.3 m)
Main Fixed	800 s. tons @ 95 ft (725 MT @ 28.9 m)
Auxiliary	150 s. tons @ 190 ft (136 MT @ 60.9m)
Whip	50 s. tons @ all radii (45 MT @ all radii)

AUXILIARY CRANE(s)

Make, Model	Manitowoc 4000 W
Type	Crawler
Boom Length	120 ft (36.58 m)
Capacity	93 s. tons (84 MT)

MISSION EQUIPMENT

Pipelay Method(s)	Conventional S-Lay
No. of Work Stations (@ 40 ft)	7
Pipe Diameter (min/max)	2 in / 36 in
Tensioners (make, type)	(1) Western Gear, LPT-80
Total Capacity (each/total)	80 kips (36,288 kg)
Reel Capacity (tonnage)	N/A
Abandon/Rec. Winch	
Type (make/model)	Manitowoc 460
AR Wire (length/diameter)	3,000 ft (914.4 m) / 2 in
Capacity	200,000 lb (90,720 kg) line pull
Davits	N/A

STINGER

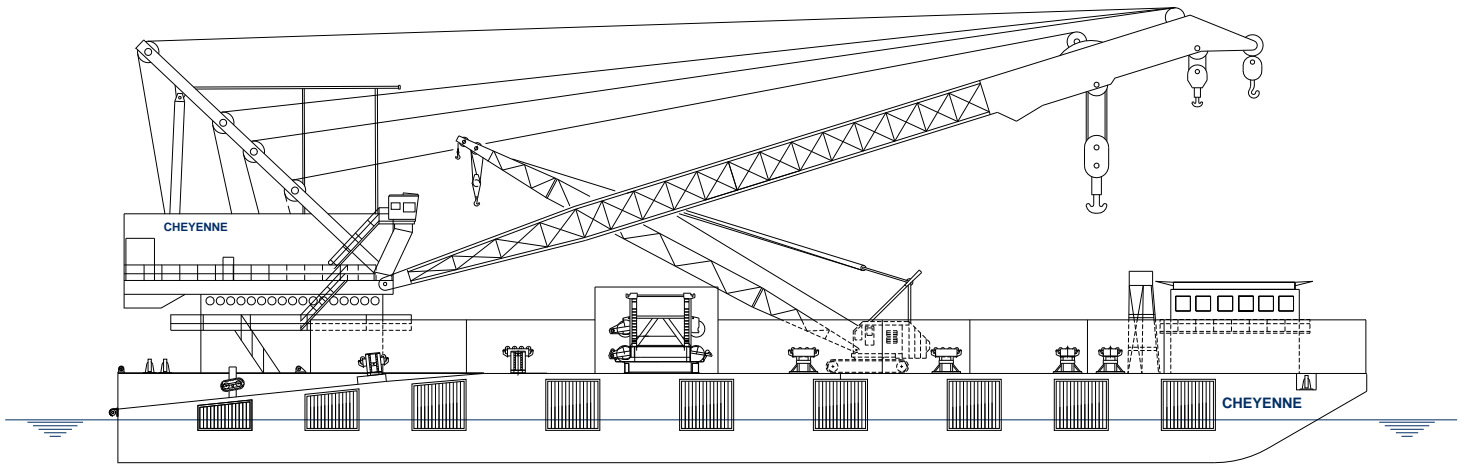
Type	Ladder (articulated in construction)
Length (min/max)	100 ft (30.48 m)

PIPE BURY EQUIPMENT

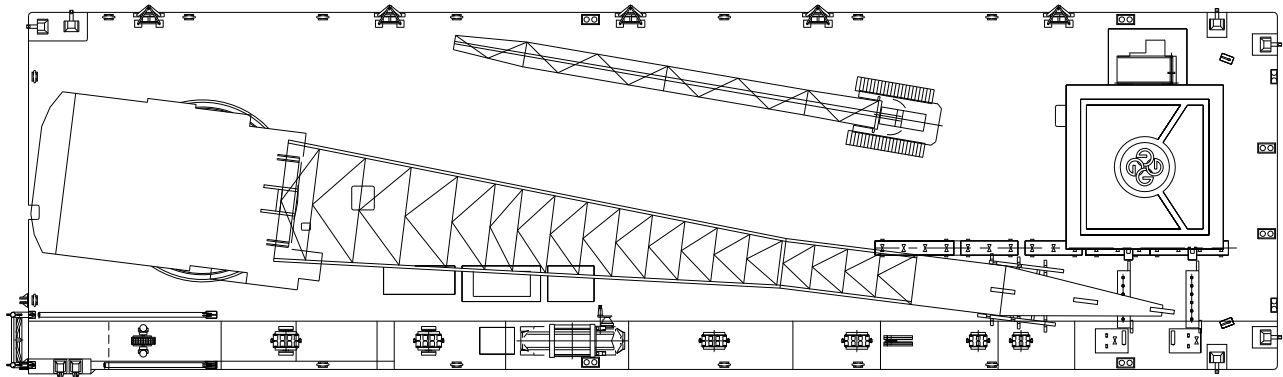
.....N/A

DIVING SYSTEM

.....N/A



Profile



Plan



globalind.com

Operations

8000 Global Drive
Carlyss, LA 70665 USA
Tel +1.337.583.5000
Fax +1.337.583.5100

Business Development

11490 Westheimer, Suite 400
Houston, TX 77077 USA
Tel +1.281.529.7979
Fax +1.281.529.7980