

# Chickasaw

Reel Pipelay Barge



Global Industries

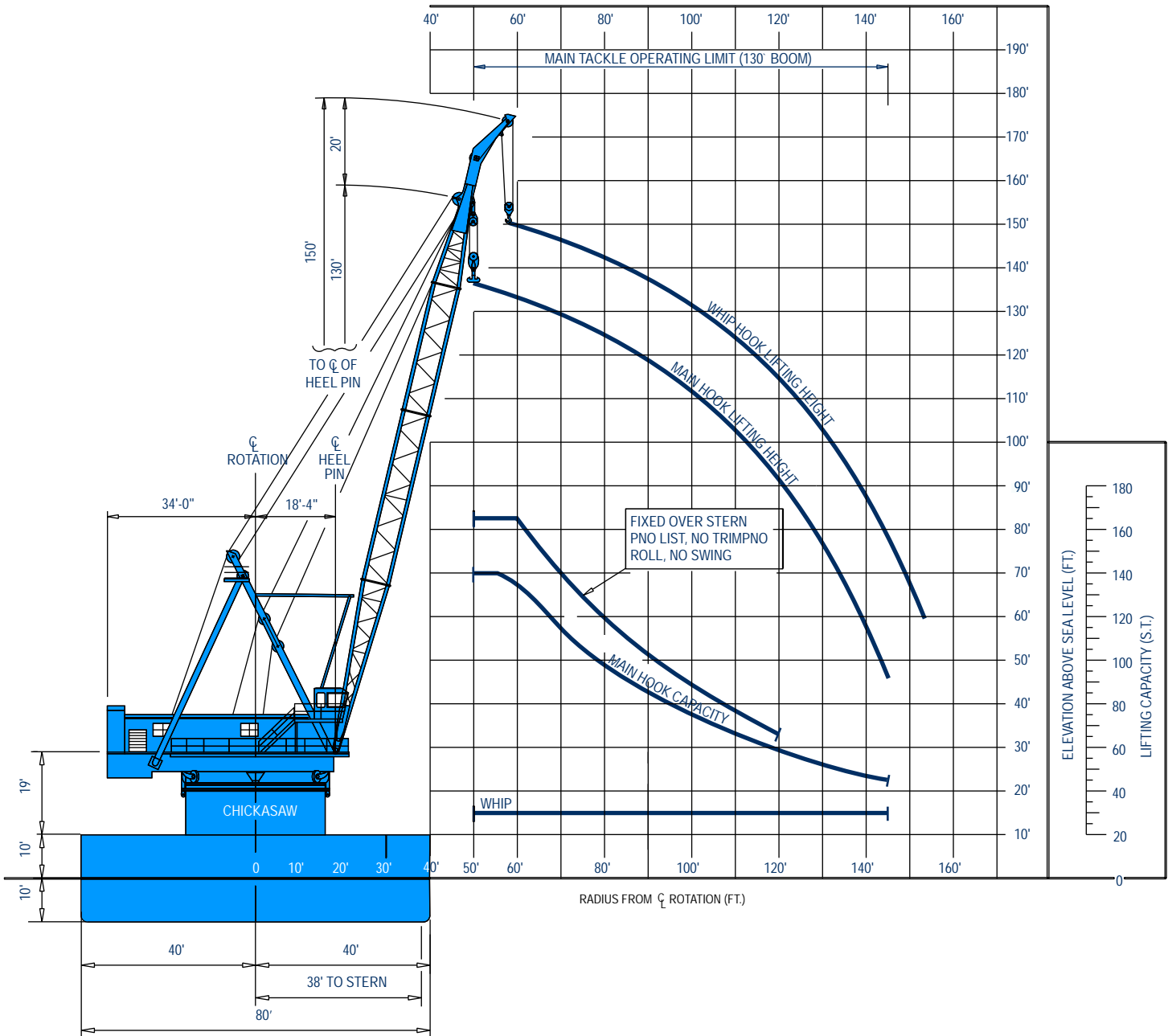
**Chickasaw**

[globalind.com](http://globalind.com)





# VESSEL DATA SHEET



**HOOK RADIUS vs. LIFTING CAPACITY & HOOK HEIGHT**

## Pipelay Derrick Barge



### GENERAL

Length (overall).....275 ft (83.82 m)  
 Width.....80 ft (24.38 m)  
 Depth.....20 ft (6.10 m)  
 Classification.....All Oceans, ABS A-1  
 Year Built.....1970  
 Registry (Flag).....USA  
 Operating Draft (min/max).....9 ft (2.74m) / 14 ft (4.27 m)  
 Tonnage (gross / net).....4722 / 1415  
 Max Deck Load.....Project Specific  
 Free Deck Area (length x width).....73.5 ft (22.4 m) x 49 ft (14.94 m)  
 Moon Pool (yes / no).....no  
 Accommodations.....73 people  
 Hospital Beds.....6  
 Transit Speed (econ / max).....Towed  
 Helicopter Max rating.....6,200 lbs (2,812.32 kg)  
 Helicopter Refueling Capacity.....N/A  
 Helideck Dimensions.....40 ft (12.19 m)

### MACHINERY

Main Engines.....N/A  
 No. of Generators.....4  
 Main Power.....(2) 650 kW AC; (2) 645 kW DC  
 Auxiliary Power.....N/A  
 No. of Compressors.....(1) 125 psi  
 Total Output.....750 cfm (1,274.25 m<sup>3</sup>/h)  
 Water Makers.....N/A  
 Total Capacity.....N/A

### BUNKER CAPACITY

Fuel.....60,000 USG (227,100 L)  
 Fresh Water.....N/A  
 Potable Water.....100,000 USG (378,500 L)

### DYNAMIC POSITIONING

DP Class.....N/A  
 DP System.....Nautronix ASK4002 w/dual redundant controls  
 Thrusters (2) Bow (2) Stern  
 Type Th500 Retractable HRP 600L Retractable  
 Power 550 hp ea 750 hp ea.  
 Total DP Power.....2,600 hp

### COMMUNICATION SYSTEMS

Telephone, VHF Radios, Satellite Phone,  
 E-mail & Fax, Client Internet

### NAVIGATION

Radar-Furuno Navnet 1943 C/NT, AIS-GPS; AIS Satellite Compass

### MOORING EQUIPMENT

No. of Anchors; Wt (3); 20,000 lb (9,072 kg) (1) 10,000 lb (4,536 kg)  
 Make, type Delta Flipper Delta Flipper  
 No. of Winches.....2  
 Make, type.....American 480 B  
 Wire (length/diameter).....2,500 ft (762 m) / 1.5 in

### MAIN CRANE

Derrick  
 Make, Model.....Clyde 32  
 Type.....Revolving  
 Boom Length  
 Main.....130 ft (39.62 m)  
 Auxiliary.....N/A  
 Whip.....150 ft (45.72 m)  
 Capacity  
 Main Revolving.....140 s. tons @ 50 ft (127 MT @ 15.24 m)  
 Main Fixed.....165 s. tons @ 55 ft (149.7 MT @ 16.74 m)  
 Auxiliary.....N/A  
 Whip.....30 s. tons @ 45 ft (27.2 MT @ 13.72 m)

### AUXILIARY CRANE(s)

Make, Model & Type.....N/A

### MISSION EQUIPMENT

Pipelay Method(s).....Reel S-Lay  
 No. of Work Stations (@ 40 ft).....3  
 Pipe Diameter (min/max).....4 in / 12 in  
 Tensioners (make, type).....N/A  
 Total Capacity (each/total).....N/A  
 Reel Capacity (tonnage).....2,500 s. Tons (2,267 MT)

Diameter	Capacity (mi)	Capacity (km)
4	45.27	72.8847
6	19.13	30.7993
8	11.55	18.5955
10	5.68	9.1448
12	3.79	6.1019

Abandon/Rec. Winch  
 Type (make/model).....Smatco  
 AR Wire (length/diameter).....7,000 ft (2,133.6 m) / 2 in  
 Capacity.....200,000 lb (90,720 kg)  
 Davits.....N/A

### STINGER

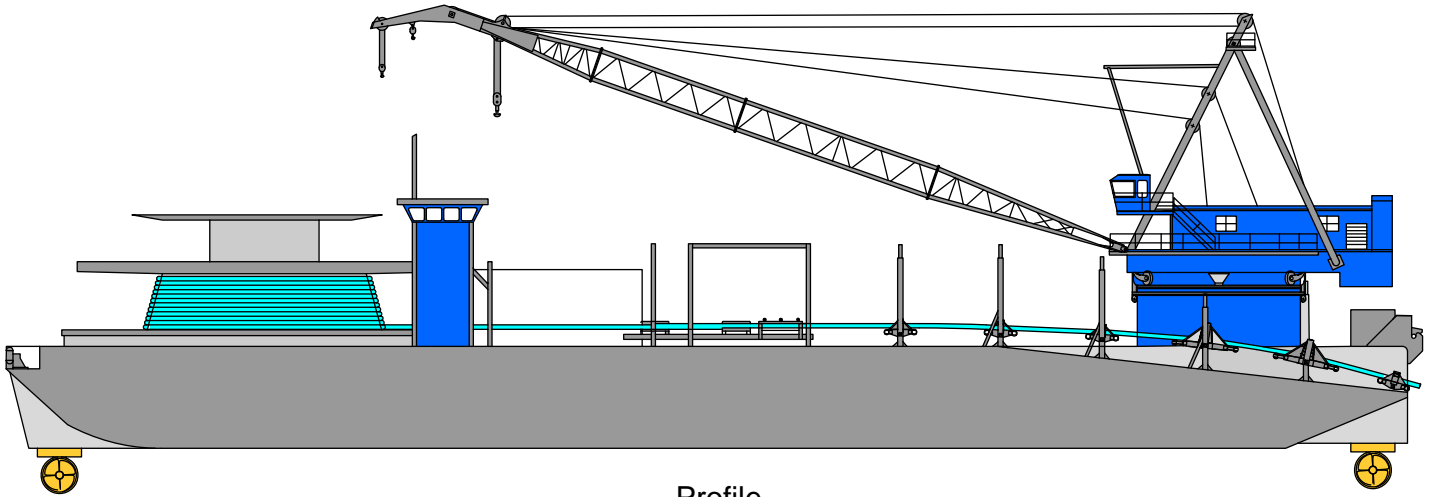
Type.....Fixed and Articulate  
 Length (min/max).....40 ft (12.192 m) & 100 ft (30.48 m) Articulate;  
 .....100 ft (30.48 m) Fixed

### PIPE BURY EQUIPMENT

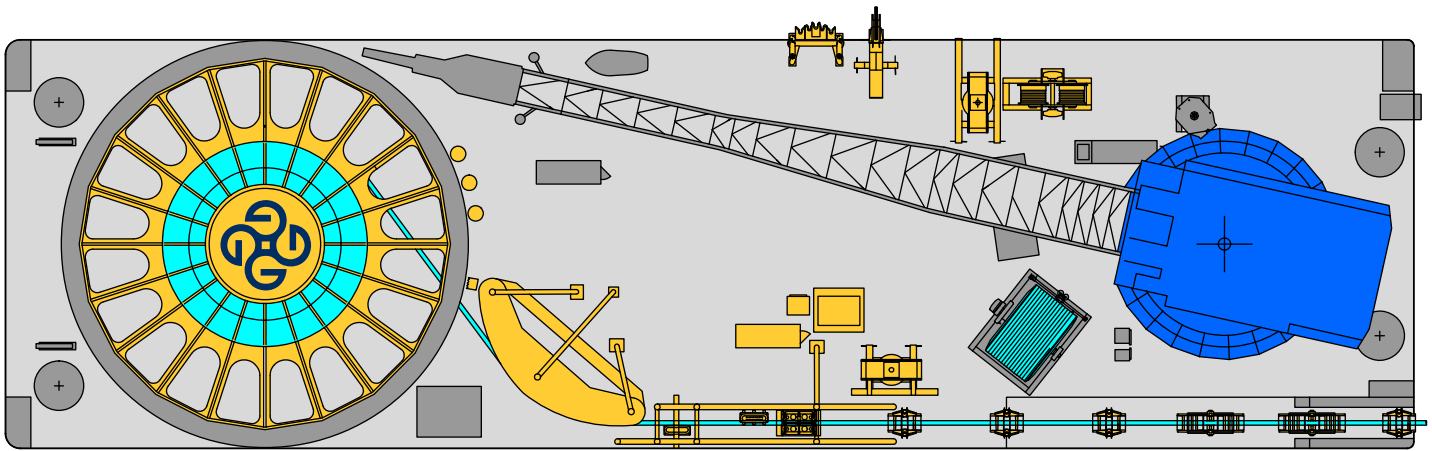
.....N/A

### DIVING SYSTEM

.....N/A



Profile



Plan



[globalind.com](http://globalind.com)

**Operations**

8000 Global Drive  
Carlyss, LA 70665 USA  
Tel +1.337.583.5000  
Fax +1.337.583.5100

**Business Development**

11490 Westheimer, Suite 400  
Houston, TX 77077 USA  
Tel +1.281.529.7979  
Fax +1.281.529.7980