

Comanche Pipelay/Derrick Barge



Global Industries

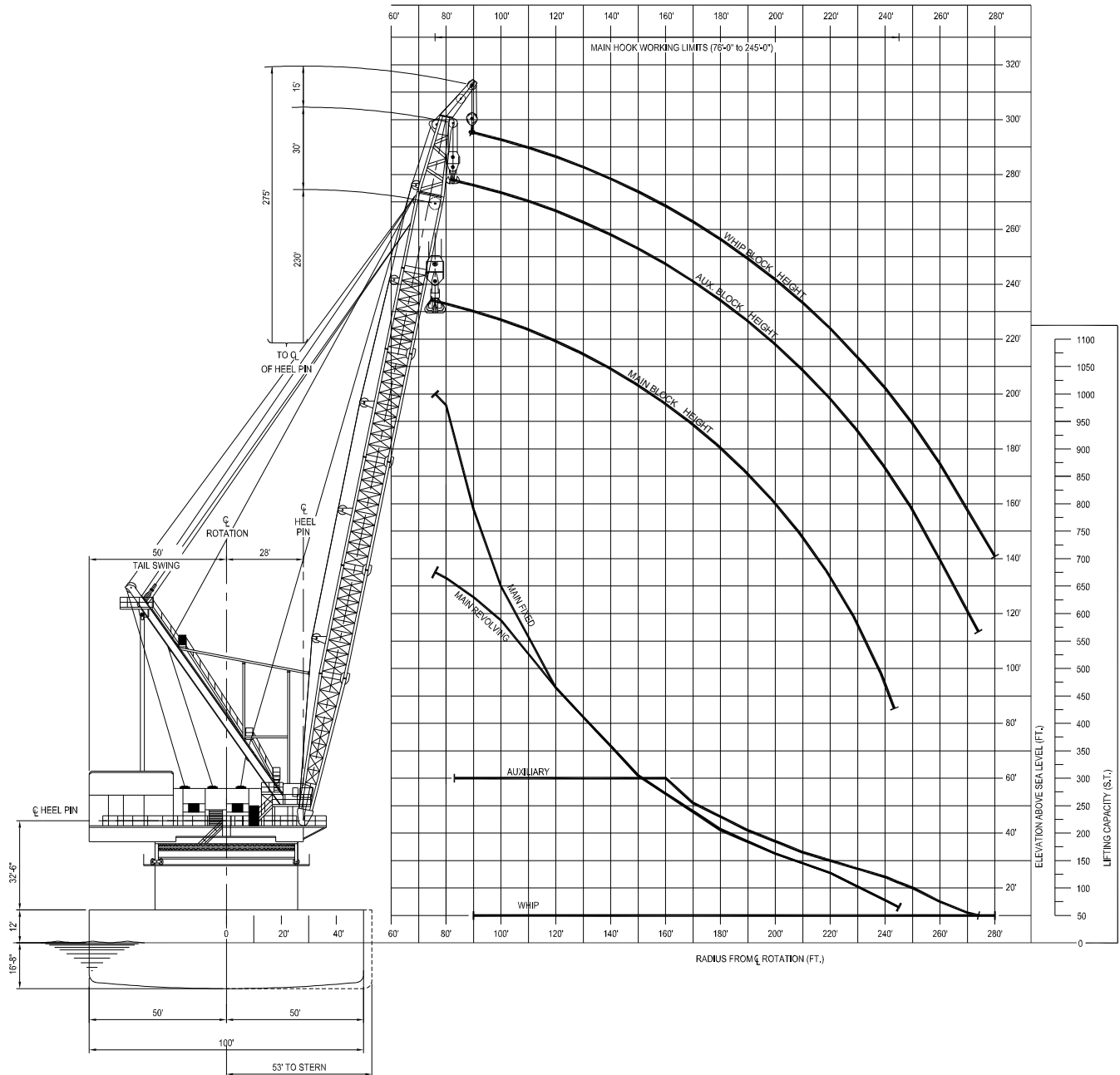
Comanche

globalind.com





VESSEL DATA SHEET



HOOK RADIUS vs. LIFTING CAPACITY & HOOK HEIGHT

Pipelay Derrick Barge



GENERAL

Length (overall)	401 ft (122.22 m)
Width	100 ft (30.48 m)
Depth	29 ft (8.84 m)
Classification	ABS A-1
Year Built	1969
Registry (Flag)	Vanuatu
Operating Draft (min/max)	14 ft (4.27 m) / 19 ft (5.79 m)
Tonnage (gross / net)	10324 gross
Max Deck Load	Project Specific
Free Deck Area (length x width)	180 ft (54.86 m) x 60 ft (18.29 m)
Moon Pool (yes / no)	no
Accommodations	243 people
Hospital Beds	2
Transit Speed (econ / max)	Towed
Helicopter Max Rating	10,300 lbs (4,672.08 kg)
Helicopter Refueling Capacity	N/A
Helideck Dimensions	72 ft x 72 ft (21.95 m x 21.95 m)

MACHINERY

Main Engines	N/A
No. of Generators	5
Main Power	(4) 250 kW
Auxiliary Power	(1) 250 kW
No. of Compressors	6
Total Output	3,150 cfm (5,351.85 m ³ /h)
Water Makers	(2) Sea Recovery Reverse Osmosis
Total Capacity	158 cu. m / day

BUNKER CAPACITY

Fuel	520,000 USG (1,968,200 L)
Fresh Water	634,000 USG (2,399,690 L)
Potable Water	690,000 USG (2,611,650 L)

DYNAMIC POSITIONING

.....N/A

COMMUNICATION SYSTEMS

- (1) VSAT
- (1) HF/SSB Transceiver
- (7) VHF/FM Marine,
- (1) VHF/FM Avionics
- (1) Inmarsat 'B'

NAVIGATION

.....N/A

MOORING EQUIPMENT

No. of Anchors; Weight	(12); 26,400 lb (12,000 kg)	
Make, type	Delta Flipper	
No. of Winches	(4) Double Drum	(2) Double Drum
Make, type	Clyde AD 175	Skagit RB 150
Wire (length/dia)	4,000 ft (1,219 m) / 1.75 in	5,000 ft (1,524 m) / 2 in

MAIN CRANE

Derrick	
Make, Model	Am Clyde / 52 - DE 230 + 30 + 15
Type	Revolving
Boom Length	
Main	230 ft (72.85 m)
Auxiliary	260 ft (79.25 m)
Whip	275 ft (83.82 m)
Capacity	
Main Revolving	675 s. tons @ 75 ft (614 MT @ 22.86 m)
Main Fixed	1,000 s. tons @ 80 ft (907 MT @ 24.38 m)
Auxiliary	300 s. tons @ 160 ft (272 MT @ 48.77m)
Whip	50 s. tons @ 280 ft (45 MT @ 85.34 m)

AUXILIARY CRANE(s)

Make, Model	Manitowoc 4100 W/S2
Type	Crawler
Boom Length	150 ft (45.72 m)
Capacity	90 s. tons (81 MT)

MISSION EQUIPMENT

Pipelay Method(s)	Conventional S-Lay
No. of Work Stations (@ 40 ft)	8
Pipe Diameter (min/max)	4 in OD / 60 in OD
Tensioners (make, type)	(2) Remacut
Capacity (ea./total)	132 kips (60,000 kg) / 264 kips (120,000 kg)
Tensioner Power Plant	(3) CAT 3508
Capacity (ea./total)	800kW / 2400 kW
Reel Capacity (tonnage)	N/A
Abandon/Rec. Winch	
Type (make,model)	Remacut, 120 T
AR Wire (length/diameter)	5,000 ft (1,524 m) / 2 1/2 in
Capacity	264,000 lb (120,000 kg)
Davits	5; 44 s. tons (40 MT)

STINGER

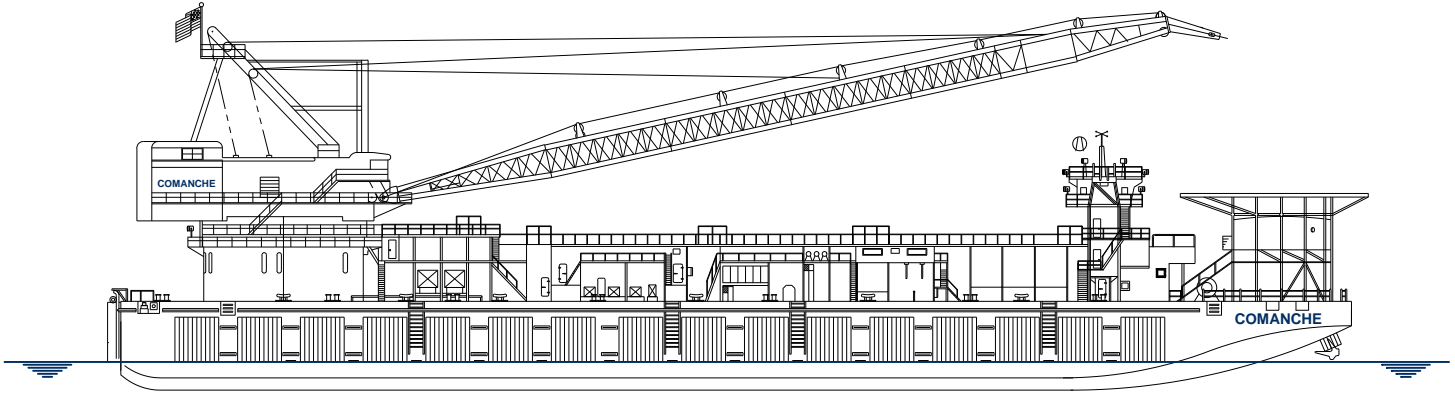
Type	Articulated (ballast)
Length (min/max)	180 ft (3 section); 240 ft (4 section)

PIPE BURY EQUIPMENT

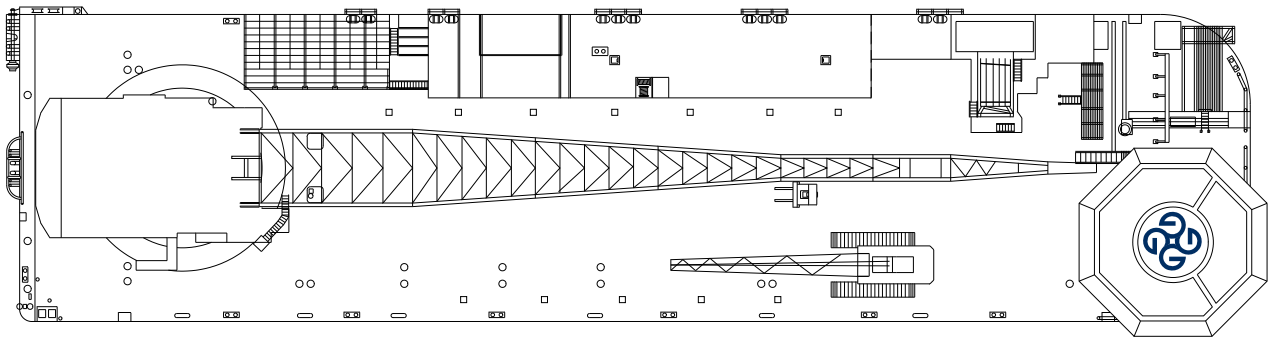
.....N/A

DIVING SYSTEM

.....N/A



Profile



Plan



globalind.com

Operations

8000 Global Drive
Carlyss, LA 70665 USA
Tel +1.337.583.5000
Fax +1.337.583.5100

Business Development

11490 Westheimer, Suite 400
Houston, TX 77077 USA
Tel +1.281.529.7979
Fax +1.281.529.7980