

DLB-264

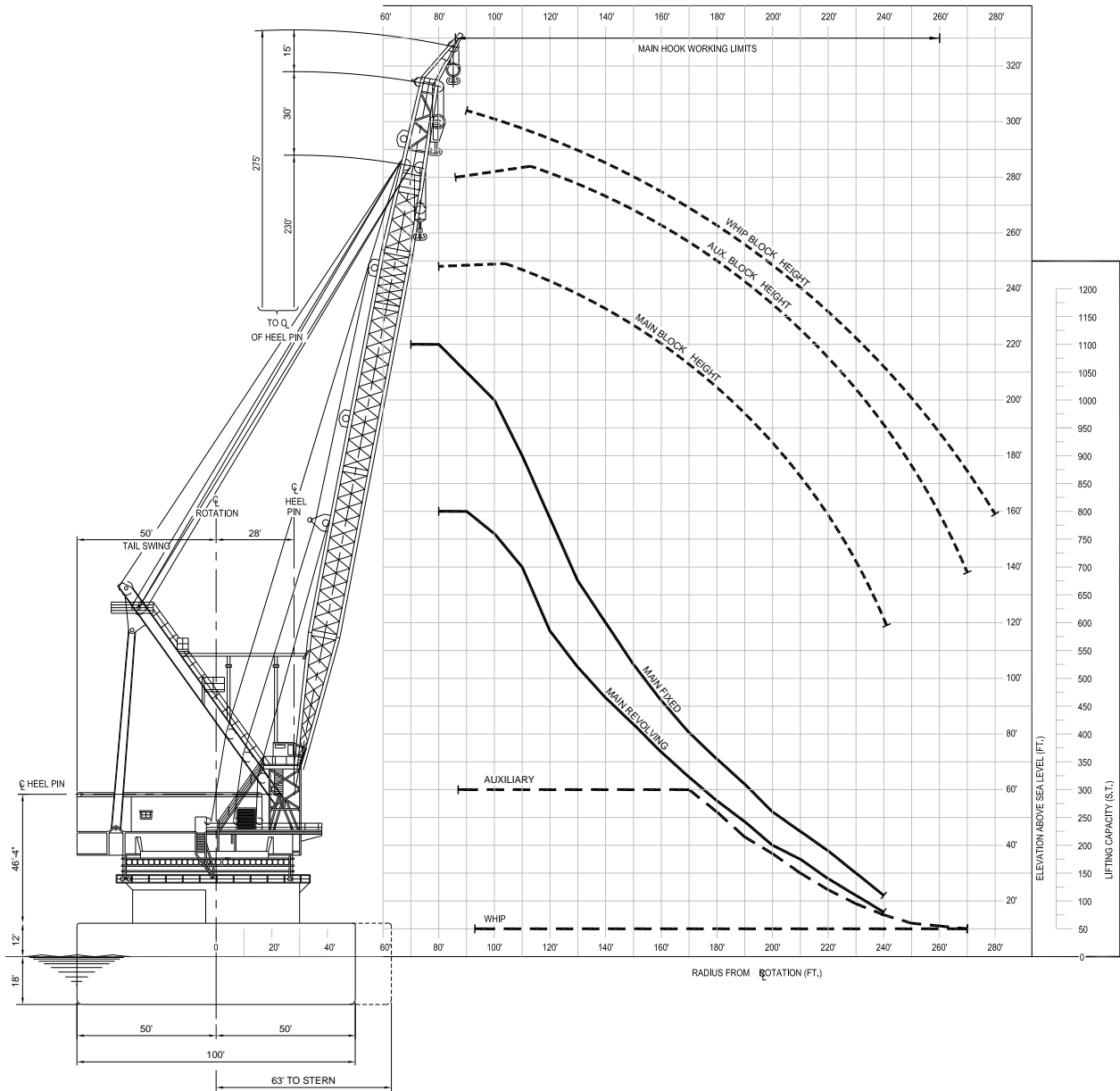
globalind.com

DLB-264 Pipelay/Derrick Barge





VESSEL DATA SHEET



HOOK RADIUS VS. LIFTING CAPACITY

Pipelay Derrick Barge



GENERAL

Length (overall)	400 ft (121.92 m)
Width	100 ft (30.48 m)
Depth	30 ft (9.14 m)
Classification	ABS A-1
Year Built	1966
Registry (Flag)	Vanuatu
Operating Draft (min/max)	14 ft (4.27 m) / 20 ft (6.10 m)
Tonnage (gross / net)	11010 / 3303
Max Deck Load	3,200 lbs / sq ft (15,607.74 kg/m ²)
Free Deck Area (length x width)	270 ft (82.3 m) x 50 ft (15.24 m)
Moon Pool (yes / no)	no
Accommodations	275 people
Hospital Beds	2
Transit Speed (econ / max)	Towed
Helicopter Max Rating	19,000 lbs (8,618.4 kg)
Helicopter Refueling Capacity	N/A
Helideck Dimensions	74 ft (21.95 m) x 74 ft (21.95 m); octagonal

MACHINERY

Main Engines	N/A
No. of Generators	6
Main Power	(4) 500 kW
Auxiliary Power	(1) 150 kW emergency; (1) 600 kW aux
No. of Compressors	4
Total Output	3,000 cfm (5,097 m ³ /h)
Water Makers	(2) MECO; (1) RO "Sea Recovery"
Total Capacity	1,900 USG/h (7,195.5 L/h)

BUNKER CAPACITY

Fuel	201,170 USG (761,428 L)
Fresh Water	506,296 USG (1,916,330 L)
Potable Water	184,811 USG (699,506 L)

DYNAMIC POSITIONING

	N/A
--	-----

COMMUNICATION SYSTEMS

- (1) Mini-M System "GSP 3000"; (1) Inmarsat 'B' "Furuno Felcom 81";
- (2) HF/SSB Transceiver "Sailor & Motorola"; (1) HF Receiver "JRC";
- (2) VHF/FM Marine "Shipmate"; (1) UHF/FM Transceiver "Motorola";
- (1) VHF/AM Avionics Radio "Narco"; (1) VSAT "Sola";
- (1) ACES Phone Fixed Sat

NAVIGATION

- (1) GPS; (1) Weather Fax "Furuno"; (1) Direction Finder "Taiyo";
- (1) Non-directional Radio Beacon "Southern Avionics";
- (2) Wind Speed Direction Indicator

MOORING EQUIPMENT

No. of Anchors; Weight	(8); 25,000 lb (11,340 kg)
Make, type	Delta Flipper
No. of Winches	(8) Single Drum
Make, type	Intercon 65185
Wire (length/diameter)	3,300 ft (1,005 m) / 2 in

MAIN CRANE

Derrick	
Make, Model	AM Clyde / 60-DE
Type	Revolving
Boom Length	
Main	230 ft (70.10 m)
Auxiliary	260 ft (79.25 m)
Whip	275 ft (83.82 m)
Capacity	
Main Revolving	800 s. ton @ 80 ft (725 MT @ 24.38 m)
Main Fixed	1,100 s. tons @ 80 ft (997 MT @ 24.38 m)
Auxiliary	300 s. tons @ 170 ft (272 MT @ 51.82 m)
Whip	50 s. tons @ all radii (45 MT @ 76.2 m)

AUXILIARY CRANE(s)

Make, Model	Manitowoc 4100 W
Type	Crawler
Boom Length	160 ft (48.77 m)
Capacity	90 s. tons (81.65 MT)

MISSION EQUIPMENT

Pipelay Method(s)	Automatic & Manual S-Lay
No. of Work Stations (@ 40 ft)	7
Pipe Diameter (min/max)	6 in / 60 in
Tensioners (make, type)	Western Gear
Total Capacity (ea/ttl)	150 kips (68,040 kg) / 300 kips (136,080 kg)
Reel Capacity (tonnage)	N/A
Abandon/Rec. Winch	
Type (make, model)	Australian Haulage
AR Wire (length/diameter)	4,028 ft (1,227.73 m) / 2.5 in
Capacity	300,000 lbs (136,080 kg)
Davits	(6); 50 s. tons (45 MT)

STINGER

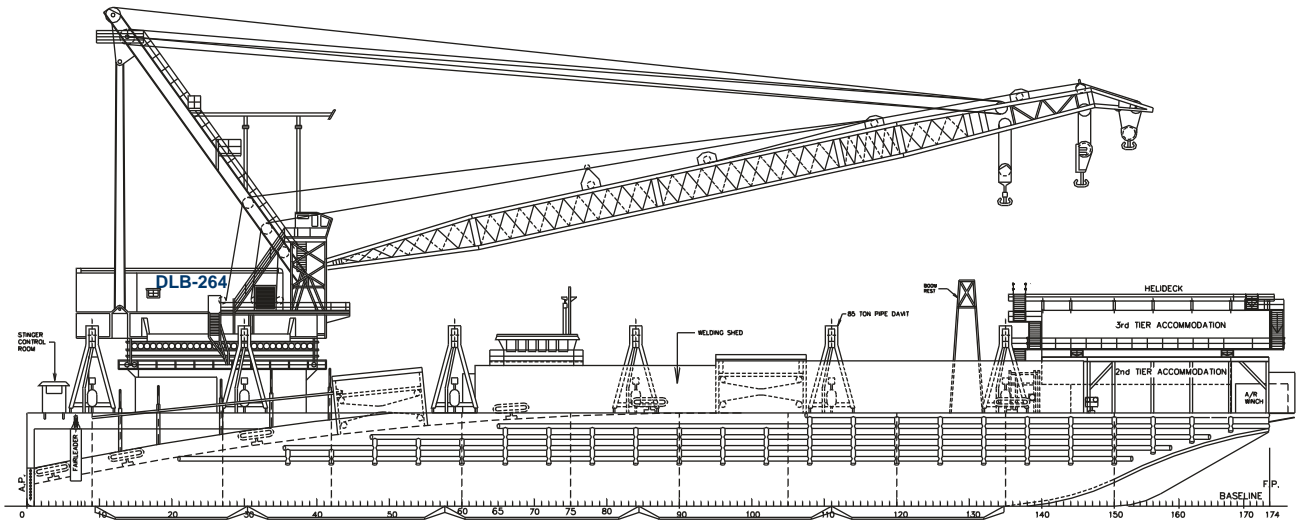
Type	Alpha Pontoon
Length (min/max)	110 ft (33.53 m) / 160 ft (48.77 m)

PIPE BURY EQUIPMENT

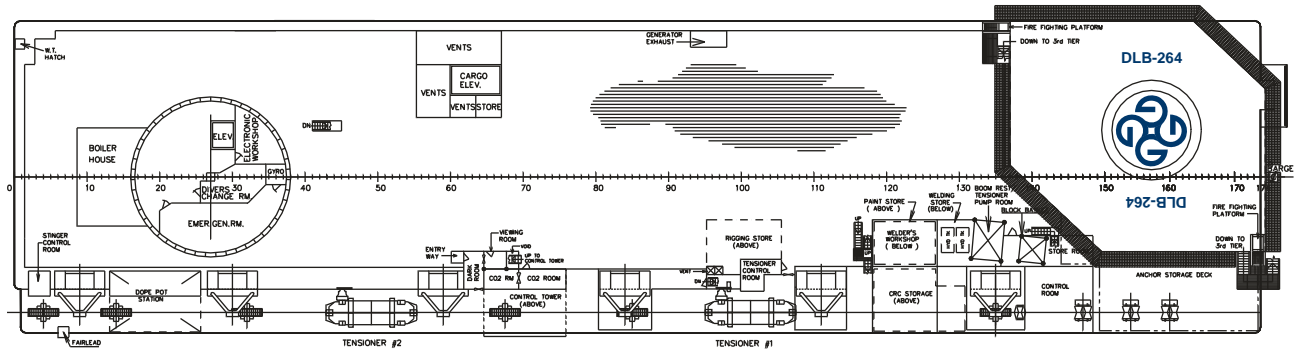
	N/A
--	-----

DIVING SYSTEM

	N/A
--	-----



Profile



Plan



globalind.com

Operations

8000 Global Drive
 Carlyss, LA 70665 USA
 Tel +1.337.583.5000
 Fax +1.337.583.5100

Business Development

11490 Westheimer, Suite 400
 Houston, TX 77077 USA
 Tel +1.281.529.7979
 Fax +1.281.529.7980