

DLB-332

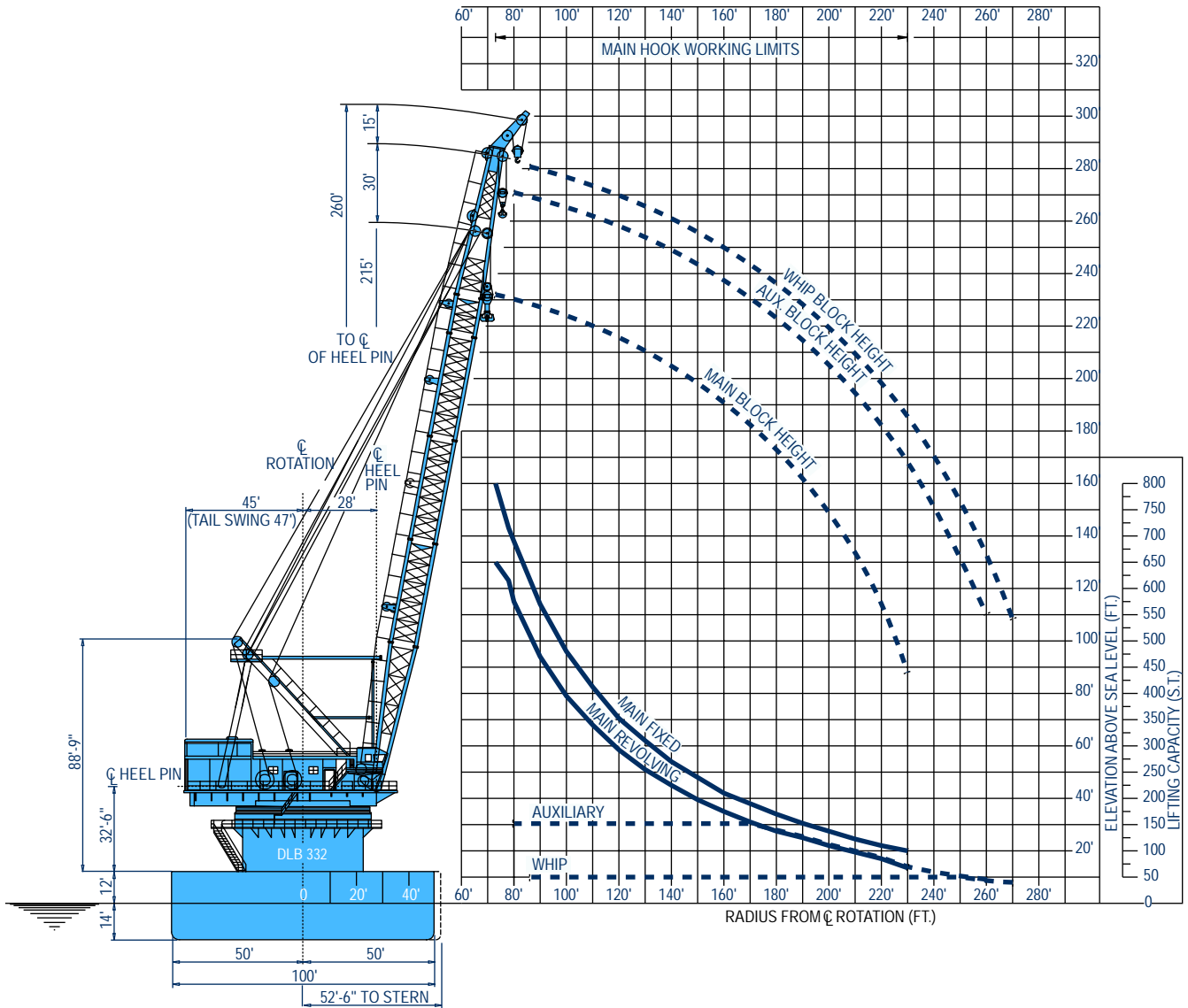
globalind.com

DLB-332 Pipelay/Derrick Barge





VESSEL DATA SHEET



HOOK RADIUS vs. LIFTING CAPACITY & HOOK HEIGHT

Pipelay Derrick Barge



GENERAL

Length (overall)	352.5 ft (107.44 m)
Width	100 ft (30.48 m)
Depth	26 ft (7.92 m)
Classification	ABS A-1
Year Built	1971
Registry (Flag)	Vanuatu
Operating Draft (min/max)	14 ft (4.27 m) / 18 ft (5.49 m)
Tonnage (gross / net)	8205 / 2461
Max Deck Load	Project Specific
Free Deck Area (length x width)	Project Specific
Moon Pool (yes / no)	no
Accommodations	247 people
Hospital Beds	2
Transit Speed (econ / max)	Towed
Helicopter Max Rating	Sikorsky S61N
Helicopter Refueling Capacity	N/A
Helideck Dimensions	70 ft (21.3 m) x 70 ft (21.3 m)

MACHINERY

Main Engines	N/A
No. of Generators	6
Main Power	(3) 600 kW; (2) 1,000 kW
Auxiliary Power	(1) 125 kW emergency
No. of Compressors	5
Total Output	2,185 cfm (3,712.3 m ³ /h)
Water Makers	(2) Sea Recovery R.O. Units
Total Capacity	1,200 USG/h (4,542 L/h)

BUNKER CAPACITY

Fuel	247,000 USG (934,895 L)
Fresh Water	242,000 USG (915,970 L)
Potable Water	same tank as fresh water

DYNAMIC POSITIONING

.....N/A

COMMUNICATION SYSTEMS

- (1) V-SAT Communications-MTN; (2) HF/SSB Transceiver;
 (1) HF Receiver; (4) VHF/FM Marine; (1) VHF/FM Avionics
 (1) GPS; (1) Weather Fax; (1) Mini-M System

NAVIGATION

- (1) Gyro Compass; (1) Radar; (1) Echo Sounder;
 (2) Wind Speed & Direction Indicator

MOORING EQUIPMENT

No. of Anchors; Weight	(8); 25,000 lb (11,340 kg)
Make, type	Delta Flipper
No. of Winches	(8) Single Drum
Make, type	Manitowoc D 460
Wire (length/diameter)	4,000 ft (1,219.2 m) / 1.875 in

MAIN CRANE

Derrick	
Make, Model	AM Clyde / 52-DE
Type	Revolving
Boom Length	
Main	215 ft (65.53 m)
Auxiliary	245 ft (74.68 m)
Whip	260 ft (79.25 m)
Capacity	
Main Revolving	600 s. ton @ 73 ft (544 MT @ 22.86 m)
Main Fixed	800 s. tons @ 73 ft (725 MT @ 22.25 m)
Auxiliary	150 s. tons @ 170 ft (136 MT @ 51.82 m)
Whip	50 s. tons @ 240 ft (45 MT @ 73.15 m)

AUXILIARY CRANE(s)

Make, Model	Manitowoc 4100 W
Type	Crawler
Boom Length	160 ft (48.77 m)
Capacity	90 s. tons (81.65 MT)

MISSION EQUIPMENT

Pipelay Method(s)	Conventional S-Lay
No. of Work Stations (@ 40 ft)	7
Pipe Diameter (min/max)	4 in / 42 in
Tensioners (make, type)	(1) Western Gear
Total Capacity (each/total)	180 kips (81,648 kg)
Reel Capacity (tonnage)	N/A
Abandon/Rec. Winch	
Type (make, model)	Westech ARW 100/180
AR Wire (length/diameter)	4,000 ft (1,371.6 m) / 2.5 in
Capacity	200,000 lbs (90,720 kg)
Davits	(5); 60 s. tons (54 MT)

STINGER

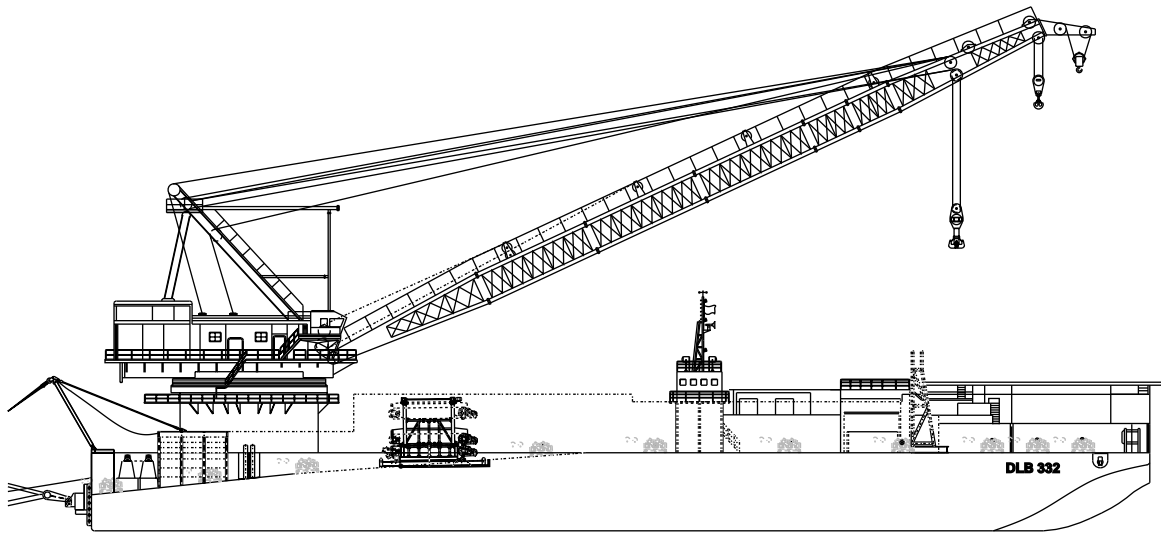
Type	Articulated (Ballast)
Length (min/max)	180 ft (3 section); 240 ft (4 section)

PIPE BURY EQUIPMENT

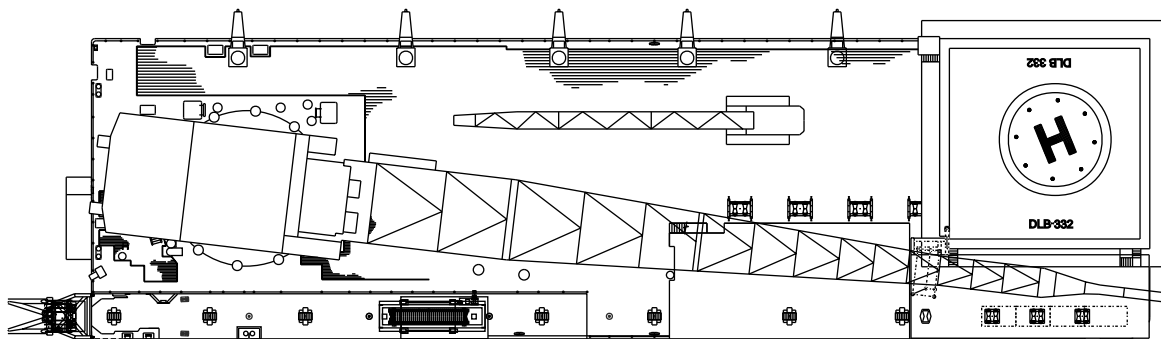
.....N/A

DIVING SYSTEM

.....N/A



Profile



Plan



globalind.com

Operations

8000 Global Drive
Carlyss, LA 70665 USA
Tel +1.337.583.5000
Fax +1.337.583.5100

Business Development

11490 Westheimer, Suite 400
Houston, TX 77077 USA
Tel +1.281.529.7979
Fax +1.281.529.7980