

Hercules

Pipelay/Derrick Barge

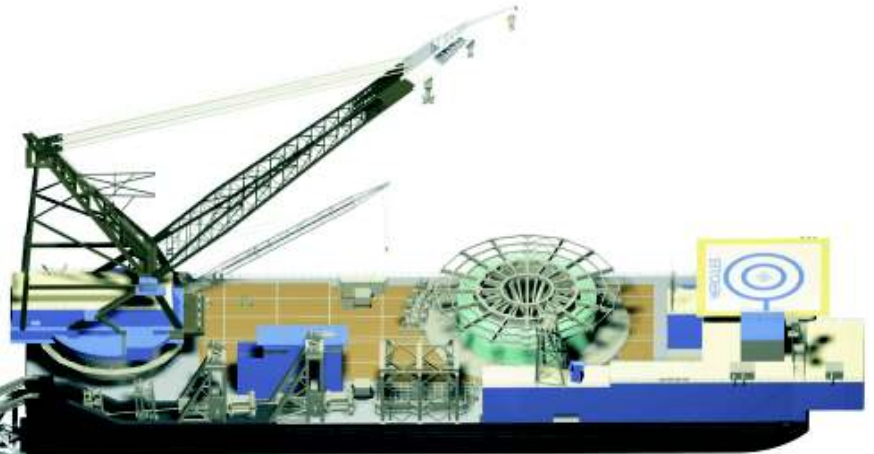




VESSEL DATA SHEET

DLB HERCULES

Conventional Pipelay, Reel Pipelay, 600 ST or 1,200 KIPS tension and Derrick lift capacity of 2000 ST makes the Global Hercules a unique and versatile vessel in offshore construction. The Global Hercules pipelay capability is designed to provide both Reel Pipelay & Conventional Pipelay. It is equipped with a removable horizontal reel, allowing the barge to be easily converted from Reel Lay to Conventional S-Lay. The 116' diameter reel has a capacity of 7000 ST of pipe from 4" to 18" diameter. In conventional lay mode the vessel can lay from 6" to 60" diameter pipe. With installed tension of 600 ST or 1,200 KIPS the Global Hercules can lay pipe in water depth up to 10,000 FSW.



PIPELAY

Global Hercules can lay various types of pipelines including:

- Flowlines in deep & ultra- deepwater depths
- Pipe-In-Pipe insulated Flowlines in deep & ultra-deepwater depths
- Trunklines in shallow and intermediate water depths
- Steel Catenary Risers (SCR) and Hybrid Catenary Risers (HCR's) both Reel Lay & Conventional Lay
- Flexible Risers
- Umbilicals and Cables

DERRICK

The Global Hercules main crane has a maximum lift capacity of 2000 ST, for platform installation, platform salvage, rig moves, and other heavy lift needs. In addition, Hercules' dynamic positioning allows the lifts to be completed quickly and in crowded field conditions.

KEY FEATURES AND BENEFITS

The DLB Hercules is the most versatile construction vessel of its kind in the world. The vessel was designed with flexibility in mind - its configuration can be easily adapted to different project types, whether it be deepwater pipelay, shallow water trunklines, platform and topsides installation, or salvage and recovery projects.

The large tensioner capability enables pipelay ranging from small diameter pipe in deepwater to very large trunklines in shallow water. The tensioners are unique in that they can accommodate pipe sizes from 6" coated OD up to 60" coated OD. (Outside Diameter)

The same tensioners can be used for either reel lay or conventional S-Lay, both of which offer faster performance than J-Lay. The tensioners and the reel are interconnected by sophisticated control system software.

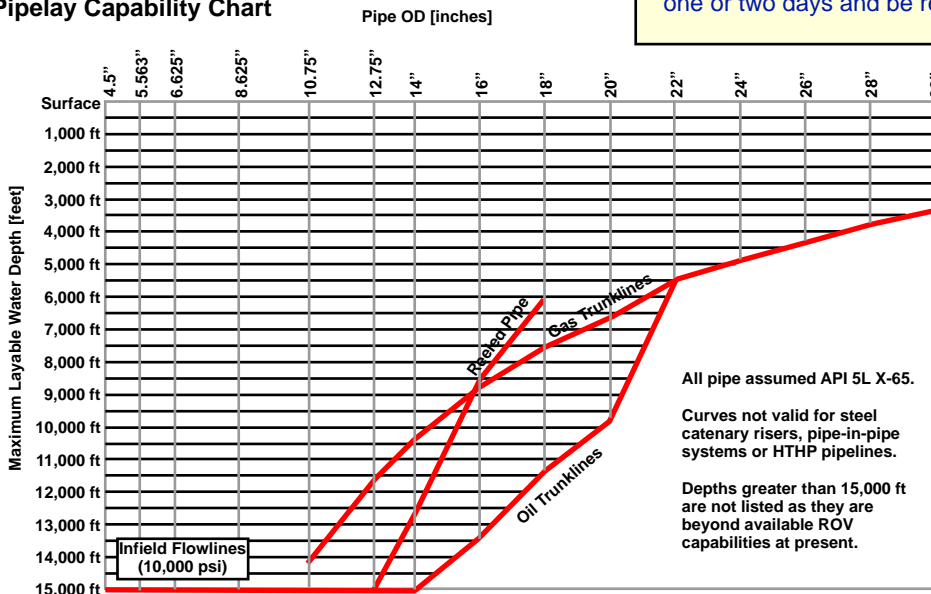
The reel system is a unique skid mounted reel that can be skidded on or off at the Carlyss Base depending on the type of project. The vessel can be reconfigured from reel lay mode to conventional S-Lay mode in a matter of one or two days and be ready for the next project.

The large derrick (2000 ton capacity) also enables heavy lifts, making it ideal for combination projects in most parts of the world.

The Hercules has one of the largest stingers in the world. The stinger is specially designed for "displacement controlled" pipelay, using strain based allowables, the only feasible method of S-Laying in deep and ultra deep water. When set to the deep water radius, the stinger has a 90 degree departure angle at the tip. For shallow water pipelay, the tail section is removable and the stinger can be set to a large overbend radius.

A powerful DP system allows for a high bottom tension capability as required for laying large trunklines in shallow water.

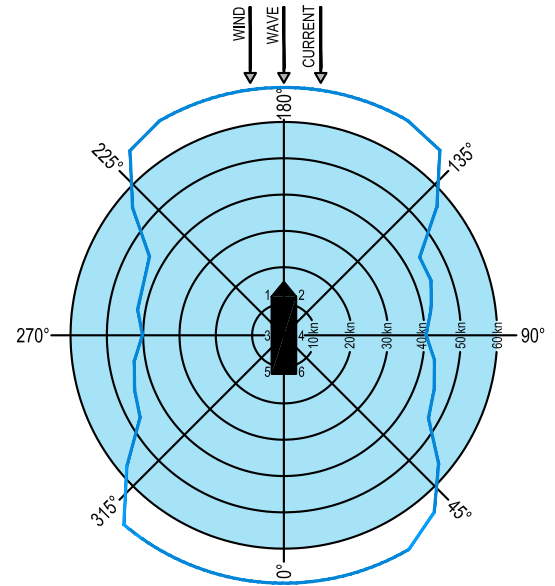
DLB Hercules Pipelay Capability Chart



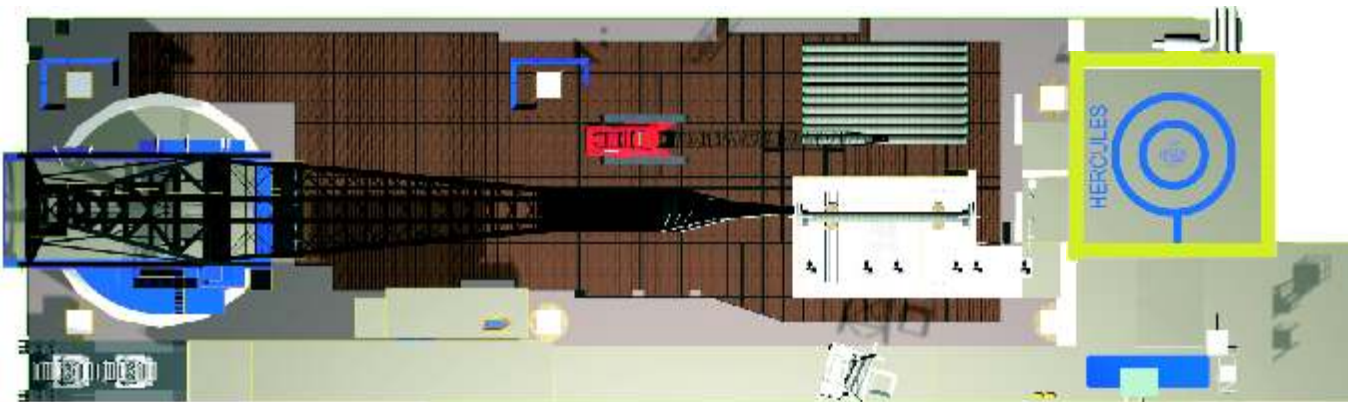
STATION KEEPING

The Hercules is equipped with 6 retractable Azimuthing 3000HP (2237KW) thrusters for station keeping. The DP system is classed by the ABS as a DPS-2 system. The 15.6MW power system was designed to meet ABS DPS-3 requirements. The system has been tuned for optimal acceleration and deceleration times when in conventional pipelay mode. The Hercules DP system has been reliable, robust, and accurate in positioning the vessel for pipelay, heavy lift, and other offshore construction projects.

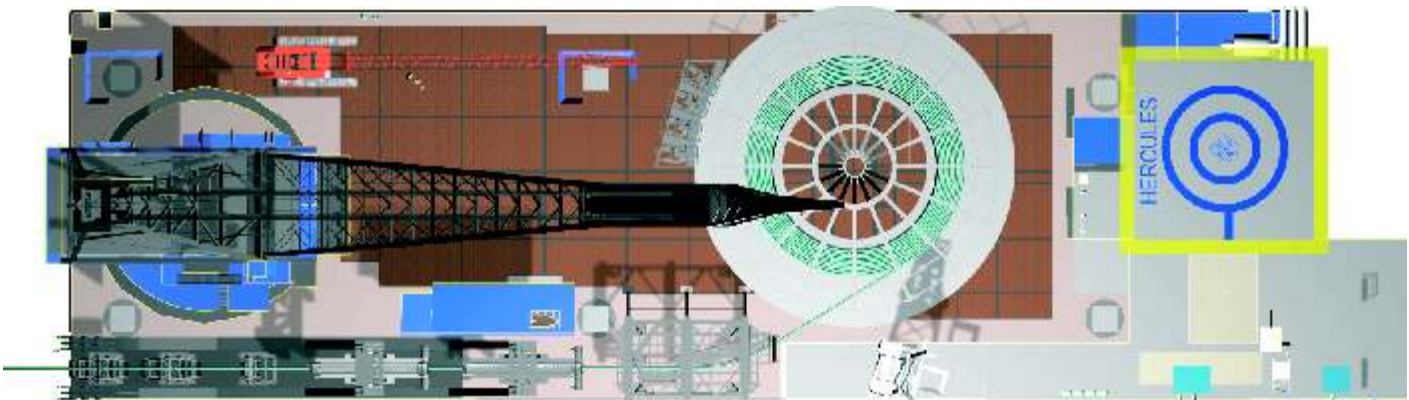
H1/3 [M]	Vw [kn]	Vc [kn]
1.8	10	1.00
3.2	20	1.00
5.1	30	1.00
7.3	40	1.00
>9.8	>50	1.00



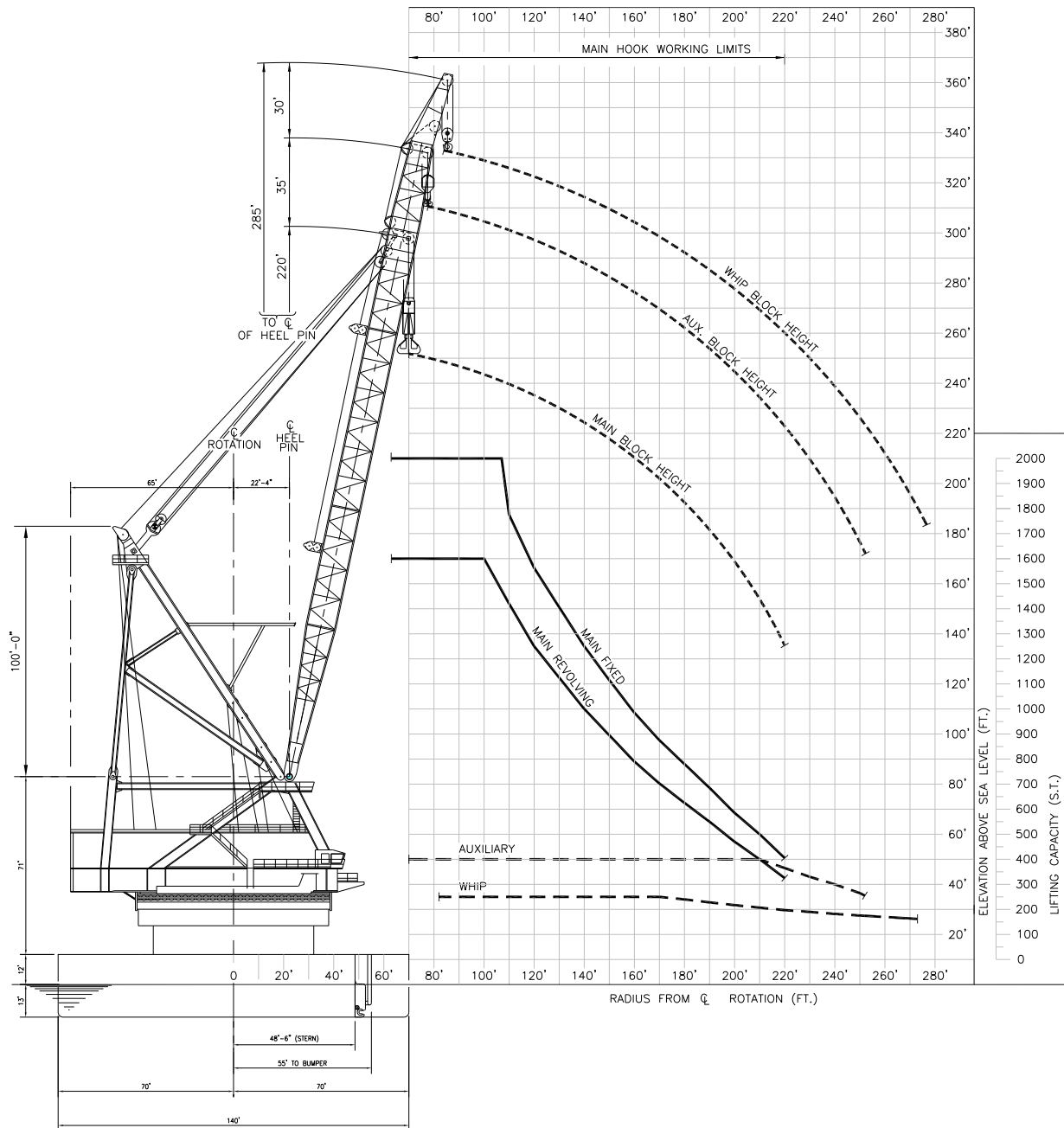
DP FOOTPRINT
(1 kt. current)



CONVENTIONAL PIPELAY



REEL PIPELAY



HOOK RADIUS vs. LIFTING CAPACITY & HOOK HEIGHT



Pipelay Derrick Barge



GENERAL

Length (overall).....485.83 ft (148 m)
 Width.....140 ft (42.67 m)
 Depth.....25 ft (7.62 m)
 ClassificationABS A-1
 Year Built.....1963
 Registry (Flag)Vanuatu
 Operating Draft (min/max).....12 ft (3.66 m) / 18 ft (5.49 m)
 Tonnage (gross / net).....18,588 / 5,576
 Max Deck Load.....7,500 s. tons (6803.85 MT)
 Free Deck Area (length x width)220 ft (67.06 m) x 110 ft (33.52 m)
 Moon Pool (yes / no).....no
 Accommodations.....269 people
 Hospital Beds.....4
 Transit Speed (econ / max)Towed
 Helicopter Max Rating.....24,000 lbs (10,886.4 kg)
 Helicopter Refueling Capacity.....N/A
 Helideck Dimensions.....62 ft x 64 ft (18.9 m x 19.5 m)

MACHINERY

Main EnginesN/A
 No. of Generators.....10
 Main Power(6) 2,600 kW EMD
 Auxiliary Power.....(3) 500 kW; (1) 315 kW emergency
 No. of Compressors(2) 125 psi
 Total Output.....1,200 cfm (2,038.8 m³/h)
 Water Makers.....2
 Total Capacity.....2,400 USG/h (9,084 L/h)

BUNKER CAPACITY

Fuel.....660,000 USG (2,498,100 L)
 Fresh Water500,000 USG (1,892,500 L)
 Potable Watersame tank as fresh water

DYNAMIC POSITIONING

DP Class.....DPS-2
 DP System.....Kongsberg Simrad SDP-21,
 DPS 2 Fully automatic redundant system
 Thrusters.....6
 Type.....Azimuthing, Retractable
 Power.....3000 hp DC ea
 Total DP Power.....18,000 hp; 504 kips total thrust

COMMUNICATION SYSTEMS

(8) Radios - Standard VHF; (1) Single side band 150 watt;
 (1) Satellite - Anristu Sat. Com.; (1) Telecom / Data Sat. System - V-SAT
 (1) Iridium Satellite Telecom / Data System; (2) Aircraft VHF Radio Syst.

NAVIGATION

(1) Nav-Master Navigation / Charting Package;
 (2) Radar; (2) GPS Systems

MOORING EQUIPMENT

.....N/A

MAIN CRANE

Derrick
 Make, Model.....Clyde / 76-DE
 Type.....Revolving
 Boom Length
 Main220 ft (67.06 m)
 Auxiliary255 ft (77.72 m)
 Whip285 ft (86.87 m)
 Capacity
 Main Revolving.....1,600 s. tons @ 100 ft (1,451 MT @ 30.48 m)
 Main Fixed.....2,000 s. tons @ 107 ft (1,814 MT @ 32.61 m)
 Auxiliary.....400 s. tons @ 210 ft (362 MT @ 64.01 m)
 Whip.....200 s. tons w/ 4 part block @ 275 ft (181 MT @ 83.82 m)

AUXILIARY CRANE(S)

Make, Model.....Manitowoc 4100 W
 Type.....Crawler
 Boom Length150 ft (45.72 m)
 Capacity.....90 s. tons (81 MT)

MISSION EQUIPMENT

Pipelay Method(s)Conventional and Reel S-Lay
 No. of Work Stations (@ 40 ft)9
 Pipe Diameter (min/max).....6 in / 60 in
 Tensioners (make, type).....Norson Power Systems
 Total Capacity (ea/ttl) ...600 kips (272,160 kg) / 1,200 kips (544,320 kg)
 Reel Capacity (tonnage)7,000 s. tons (6,350.26 MT)

Diameter (in)	Capacity (mi)	Capacity (km)
4.5	132	212.43
6.625	85	136.79
8.625	48	77.25
10.75	31	49.89
12.75	22	35.41
14	18	28.97
16	13	20.92
18	10	16.09

Abandon/Rec. Winch
 Type (make, model).....Bezemer
 AR Wire (length/diameter)5,500 ft (1,676.4 m) / 3.5 in
 Capacity.....440,000 lbs (199,584 kg)
 Davits.....N/A

STINGER

Type.....Fixed Displacement - High Departure Angle
 Length (min/max)200 ft (60.96 m) / 300 ft (91.44 m)

PIPE BURY EQUIPMENT

.....N/A

DIVING SYSTEM

.....N/A



globalind.com

Operations

8000 Global Drive
Carlyss, LA 70665 USA
Tel +1.337.583.5000
Fax +1.337.583.5100

Business Development

11490 Westheimer, Suite 400
Houston, TX 77077 USA
Tel +1.281.529.7979
Fax +1.281.529.7980