

Sea Constructor
Pipelay/Bury Barge



Global Industries

Sea Constructor

globalind.com





Pipelay Bury Barge



GENERAL

Length (overall).....250 ft (76.20 m)
 Width.....72 ft (21.95 m)
 Depth.....16 ft (4.88 m)
 Classification.....USCG, ABS-1
 Year Built.....1981
 Registry (Flag).....USA
 Operating Draft (min/max).....8 ft (2.44 m) / 10 ft (3.05 m)
 Tonnage (gross / net).....2118 / 2118
 Max Deck Load.....2,800 lb/sq ft
 Free Deck Area (length x width).....Project Specific
 Moon Pool (yes / no).....no
 Accommodations.....104 people
 Hospital Beds.....2
 Transit Speed (econ / max).....4 kts avg Towed
 Helicopter Max Rating.....3,200 lbs (1,452.8 kg)
 Helicopter Refueling Capacity.....N/A
 Helideck Dimensions.....33 ft (10 m) x 33 ft (10 m)

MACHINERY

Main Engines (power).....N/A
 No. of Generators.....5
 Main Power.....(4) 500 kW
 Auxilliary Power.....(1) 150 kW emergency
 No. of Compressors.....(2) Sulair, (1) Rotary Air
 Total Output.....1,750 cfm (2,973.25 m³/h)
 Water Makers.....N/A
 Total Capacity.....N/A

BUNKER CAPACITY

Fuel.....100,000 USG (378,500 L)
 Fresh Water.....300,000 USG (1,135,500 L)
 Potable Water.....same tank as fresh water

DYNAMIC POSITIONING

.....N/A

COMMUNICATION SYSTEMS

V-Sat, 3 Phone lines; 1 Fax
 VHF; Inmarsat back-up

NAVIGATION

.....N/A

MOORING EQUIPMENT

No. of Anchors; Weight.....(7); 8,000 lb (3,628 kg)
 Make, type.....Flipper; Stockless
 No. of Winches.....(4) Drum (stern) (3) Drum (bow)
 Make, type.....55TDAW170 55TDAW170
 Wire (length/dia) 4,100 ft (1,249 m) / 1.5 in 4,100 ft (1,249 m) / 1.5 in

MAIN CRANE

.....N/A

AUXILIARY CRANE(s)

Make, Model.....Manitowoc 4100 W
 Type.....Revolving
 Boom Length.....150 ft (45.72 m)
 Capacity.....90 s. tons (81 MT)

MISSION EQUIPMENT

Pipelay Method(s).....Conventional S-Lay
 No. of Work Stations (@ 40 ft).....5
 Pipe Diameter (min/max).....2 in / 24 in
 Tensioners (make, type).....Western Gear LPT 55
 Total Capacity (each/total).....55 kips (24,948 kg)
 Reel Capacity (tonnage).....N/A
 Abandon/Rec. Winch
 Type (make/model).....Skagit RB90W
 AR Wire (length/diameter).....4,000 ft (1,219 m) / 1.5 in
 Capacity.....50,000 lbs (22,680 kg)
 Davits.....4 w/20,000 lb Tuggers

STINGER

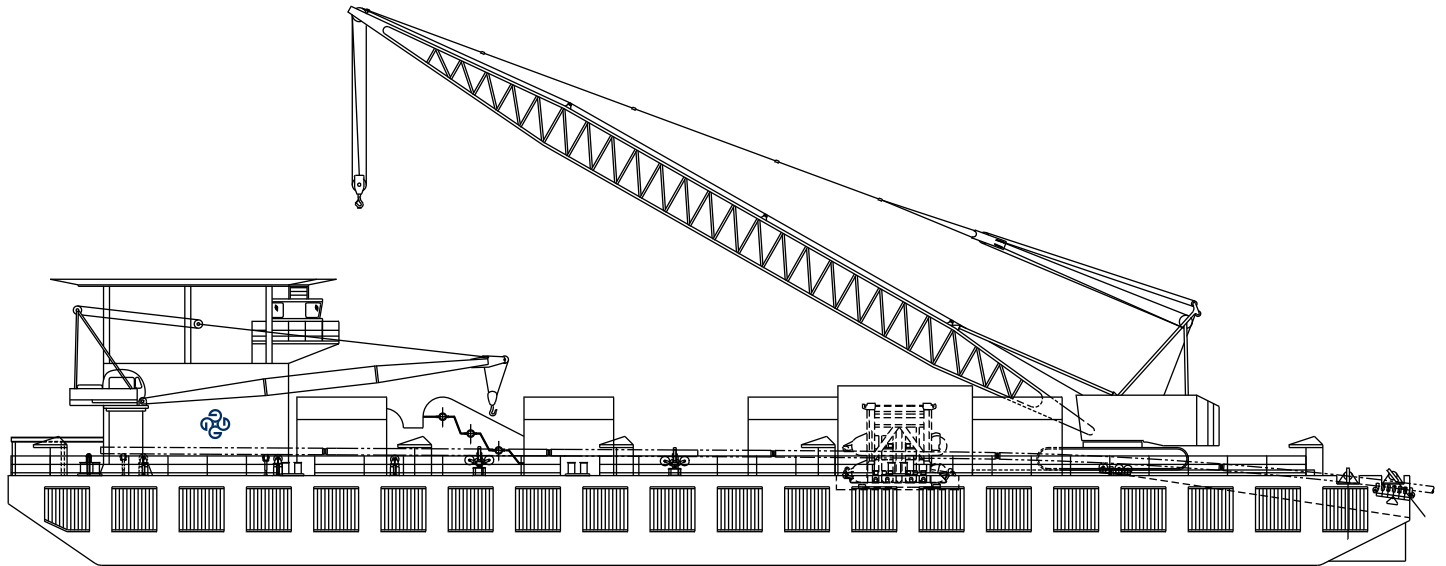
Type.....Fixed Ladder
 Length (min/max).....40 ft (12.192 m)

PIPE BURY EQUIPMENT

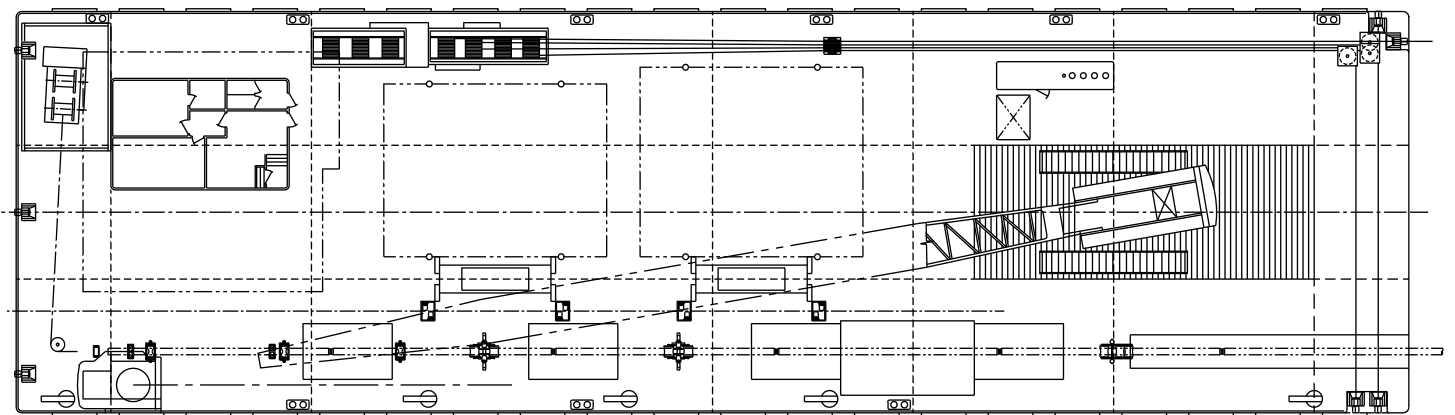
Pipe Diameter (min/max).....2 in / 24 in
 Jetting Pumps.....2
 Type.....Hazelton
 Capacity.....180,000 USG/h @ 700 psi
 Compressor Eductor (make/model).....N/A
 Capacity.....N/A
 Water Eductor (make/model).....N/A
 Capacity.....N/A
 Pump (make/model).....N/A
 Capacity.....N/A
 Sled Winch (make/model).....(1) Standard / (1) Wide Body
 Capacity.....N/A
 Hose Reels.....1
 Type.....Hyd, water, air supply
 Capacity.....600 ft (182.88 m)

DIVING SYSTEM

.....Surface Air / Surface Gas



Profile



Plan



globalind.com

Operations

8000 Global Drive
Carlyss, LA 70665 USA
Tel +1.337.583.5000
Fax +1.337.583.5100

Business Development

11490 Westheimer, Suite 400
Houston, TX 77077 USA
Tel +1.281.529.7979
Fax +1.281.529.7980