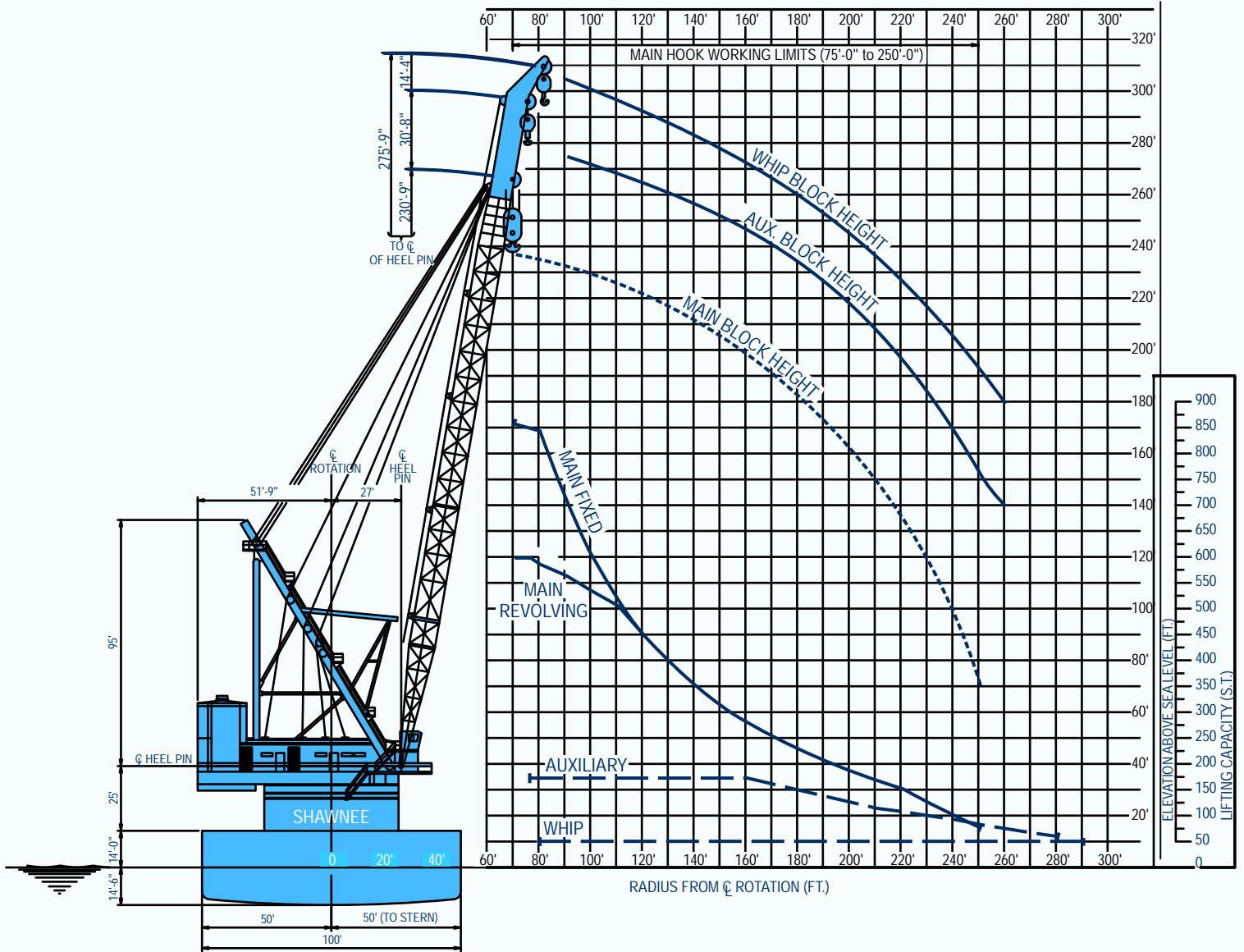






# VESSEL DATA SHEET



**HOOK RADIUS vs. LIFTING CAPACITY & HOOK WEIGHT**

## Pipelay Derrick Barge



### GENERAL

Length (overall)	400 ft (121.92 m)
Width	100 ft (30.48 m)
Depth	28.5 ft (8.69 m)
Classification	ABS A-1
Year Built	1966
Registry (Flag)	3003360 135-6; Mexico (flag); Vanuatu (registry)
Operating Draft (min/max)	13 ft (3.96 m) / 18.5 ft (5.64 m)
Tonnage (gross / net)	9029 / 2708
Max Deck Load	2,232 lbs/sq ft
Free Deck Area (length x width)	15,859 sq ft (1,473.3 m <sup>2</sup> )
Moon Pool (yes / no)	no
Accommodations	259 people
Hospital Beds	1
Transit Speed (econ / max)	Towed
Helicopter Max Rating	21,000 lbs (9,525.6 kg)
Helicopter Refueling Capacity	N/A
Helideck Dimensions	70 ft (21.37 m) x 70 ft (21.37 m) octagonal

### MACHINERY

Main Engines	N/A
No. of Generators	5
Main Power	(4) 400 kW
Auxiliary Power	(1) 30 kW
No. of Compressors	(1) Diesel, (2) Electric
Total Output	600 cfm (1019.4 m <sup>3</sup> /h)
Water Makers	(2) Sea Recovery
Total Capacity	583.33 USG/h (2,207.9 L/h)

### BUNKER CAPACITY

Fuel	417,774 USG (1,581,275 L)
Fresh Water	1,148,682 USG (4,347,761 L)
Potable Water	118,352 USG (447,962 L)

### DYNAMIC POSITIONING

.....N/A

### COMMUNICATION SYSTEMS

Comitech CDM-550  
Kenwood TKM-707 & ICOM IC-M700  
Triton Rc0089  
Sailor RT144C & (2) ICOM IC-M45  
ICOM IC-A200 & ACR Satellite 406

### NAVIGATION

Furuno CEO560 & Garmin 168  
Nauticast X-Pack DS  
Furuno 1932 mark-2 & Furuno FR-7111

### MOORING EQUIPMENT

No. of Anchors; Weight	(8); 26,455 lb (12,000 kg)
Make, type	Delta Flipper
No. of Winches	(4) 650A Double Drum
Make, type	American
Wire (length/diameter)	5,000 ft (1,524 m) / 1.75 in

### MAIN CRANE

Derrick	
Make, Model	American Hoist / 509, R-1077
Type	Revolving
Boom Length	
Main	230.75 ft (70.33 m)
Auxiliary	261.47 ft (79.70 m)
Whip	275.75 ft (84.05 m)
Capacity	
Main Revolving	600 s. tons @ 70 ft (544 MT @ 21.34 m)
Main Fixed	860 s. tons @ 70 ft (780 MT @ 38.10 m)
Auxiliary	175 s. tons @ 160 ft (158 MT @ 48.77 m)
Whip	52.5 s. tons @ all radii (47 MT @ 83.82 m)

### AUXILIARY CRANE(s)

Make, Model	Manitowoc 4100 W - S2
Type	Crawler
Boom Length	150 ft (45.72 m)
Capacity	109 s. tons (98 MT)

### MISSION EQUIPMENT

Pipelay Method(s)	Conventional S-Lay
No. of Work Stations (@ 40 ft)	8
Pipe Diameter (min/max)	8 in / 36 in
Tensioners (make, type)	(2) Western Gear
Total Capacity (ea/ttl)	54 kips (24,494.4 kg) / 108 kips (48,988.8 kg)
Reel Capacity (tonnage)	None
Abandon/Rec. Winch	
Type (make/model)	AM 1000 Single Drum
AR Wire (length/diameter)	1,800 ft (548.64 m) / 2 in
Capacity	200,000 lb (90,720 kg)
Davits	5; 33 s. tons (30 MT)

### STINGER

Type	Articulated (Ballast)
Length (min/max)	180 ft (3 section), 240 ft (4 section)

### PIPE BURY EQUIPMENT

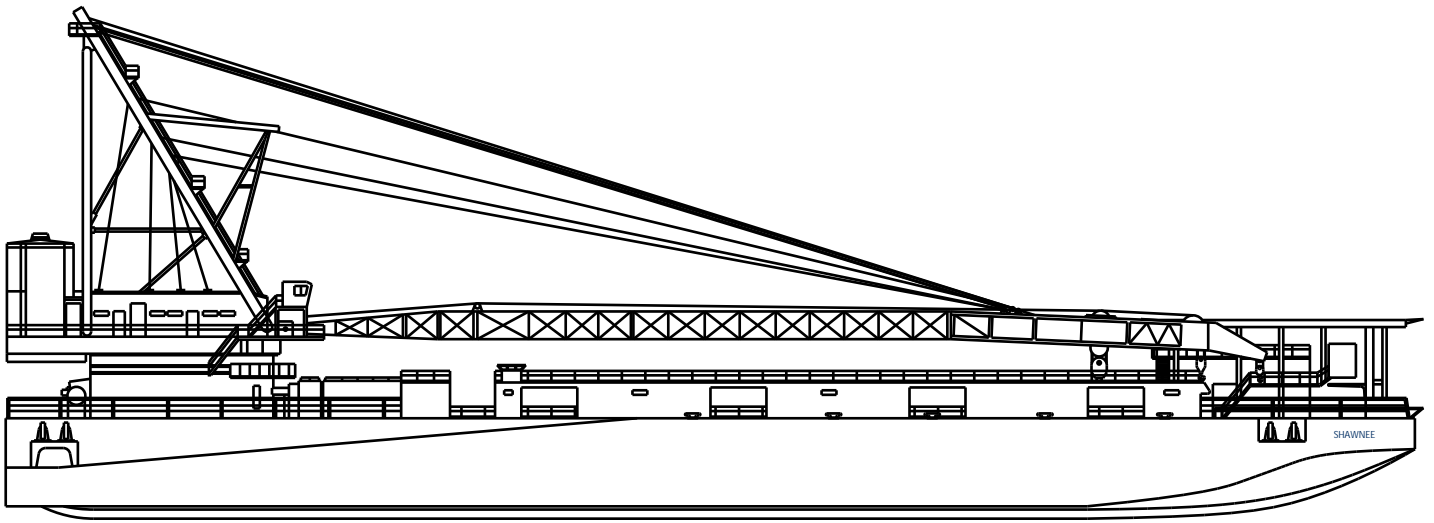
Pipe Diameter (min/max)	8 in / 40 in
Jetting Pumps	
Type	Peerless - 3 Stage S-tut-16-head 560 (hand jet pump)
Capacity	1,200 USG/min - 300 psi
Compressor Eductor (make/model)	N/A
Capacity	N/A
Water Eductor (make/model)	N/A
Capacity	N/A
Pump (make/model)	N/A
Capacity	N/A
Sled Winch (make/model)	N/A
Capacity	N/A
Hose Reels	
Type & Capacity	N/A

### DIVING SYSTEM

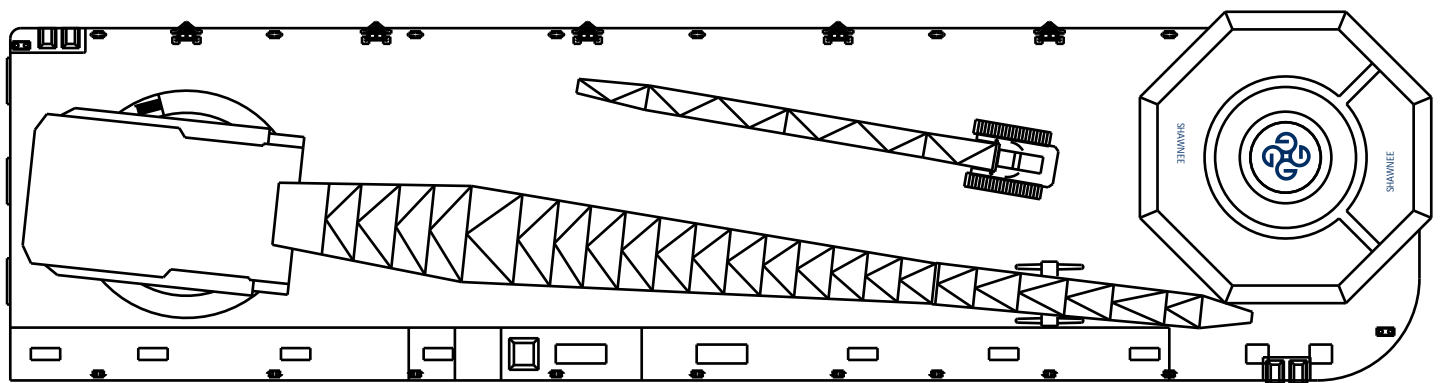
.....TSS-1200



Shawnee



Profile



Plan

#### Corporate Headquarters

8000 Global Drive  
Carlyss, La. 70665  
Phone: (337) 583-5000  
Fax: (337) 583-5100

#### Business Development

11490 Westheimer, Suite 400  
Houston, TX 77077 USA  
Tel +1.281.529.7979  
Fax +1.281.529.7980

Rev. 4/09



[globalind.com](http://globalind.com)

#### Mexico City Office

Torre del Bosque, Piso 10  
Manuel Avila Camacho #24  
Col. Lomas de Chapultepec  
C.P. 11000, Mexico, D.F.  
Phone: 0 11 52 55 5540 6999  
Fax: 0 11 52 55 5540 7061

#### Global Offshore Mexico

Calle 31 x 42 No. 120 Col. Tacubaya  
C.P. 24180, Cd. del Carmen  
Campeche, México  
Phone: 0 11 52 938 38 22300  
Fax: 0 11 52 938 38 21099